



# ADVANCED FARMING SYSTEMS

DISPLAYS • RECEIVERS AND CORRECTION SERVICES • AUTO GUIDANCE • SECTION AND RATE CONTROL  
DATA MANAGEMENT • WATER MANAGEMENT • PRECISION PLANTING

2019 PRODUCT PORTFOLIO





# PRECISION AGRICULTURE

In farming, so many things are beyond your control – the weather, commodity prices, availability of qualified labor, to name just a few. Case IH Advanced Farming Systems® (AFS) put you back in control, with precision technology that supports farm productivity and efficiencies across your entire operation – so you can make the most of every season.

## Case IH Advanced Farming Systems (AFS)

Our OEM precision farming solutions support high-efficiency farming by enabling efficient use of time, resources and inputs to maximize returns on every acre. AFS gives you more control over every operation down to the square inch. From managing inputs during field preparation, planting and growing, to monitoring yield and moisture at harvest – you control the entire crop production cycle. Reduce waste, increase overall efficiency and uncover opportunities that turn potential into profit. Rethink productivity with Case IH AFS to make the most of every season, soil and seed.

## AFS Certified Dealers

Case IH AFS Certified dealers have AFS specialists on-hand to help you operate and manage your precision farming technology, so you get the most out of your investment. Case IH AFS specialists provide a best-in-class experience and have the tools to help you calculate the ROI of AFS solutions. **Visit [www.caseih.com](http://www.caseih.com) to find a certified dealer near you with our dealer locator.**

## AFS Support Team and AFS Product Specialists

Our comprehensive Case IH support network works alongside you to quickly answer any questions you have. Get expert help from someone who's familiar with your terrain. Our dedicated AFS and product specialists are based in the field, working alongside Case IH dealers and customers.



## TABLE OF CONTENTS

<b>DISPLAYS.....</b>	<b>4</b>	<b>DATA MANAGEMENT .....</b>	<b>36</b>
AFS Pro 700 .....	4	AFS View .....	36
XCN-2050™ .....	6	AFS Mapping and Records .....	37
XCN-1050™ .....	7	AFS Books .....	37
FM-750™ .....	8	AFS Water Control.....	37
EZ-Guide® 250 .....	9	AFS Connect™ .....	38
Display Comparison Chart .....	9	Case IH UAV .....	40
Camera Kits and Accessories .....	10		
<b>RECEIVERS AND CORRECTION SERVICES .....</b>	<b>12</b>	<b>WATER MANAGEMENT .....</b>	<b>42</b>
AFS 372 .....	12	FieldLevel™ II.....	42
AccuStar .....	13	WM-Drain®.....	43
RTK Connectivity Options .....	14		
AFS RTK+.....	16	<b>PRECISION PLANTING .....</b>	<b>44</b>
Correction Services .....	17	MeterMax Ultra Test Stands .....	44
		20I20® Display .....	45
<b>AUTO GUIDANCE AND MACHINE CONTROL .....</b>	<b>18</b>	20/20 SeedSense .....	46
AFS AccuGuide™ .....	18	vSet, vSet Select .....	47
AFS AccuTurn™ .....	19	vDrive.....	48
AFS RowGuide™ .....	19	vApplyHD® .....	49
EZ-Pilot® Pro .....	20	DeltaForce .....	50
AFS ElectriSteer .....	21	SmartFirmer® .....	51
Autopilot™ .....	22	CleanSweep.....	52
Autopilot™ Motor Drive .....	23	Keeton.....	52
RG-100 Row Guide .....	23	FurrowJet® .....	53
EZ-Pilot® .....	24	SpeedTube.....	54
EZ-Steer®.....	24	WaveVision .....	54
TrueTracker™ Implement Steering .....	25	mSet®.....	55
TrueGuide™ Implement Steering.....	25	eSet .....	56
		YieldSense .....	57
<b>SECTION AND RATE CONTROL .....</b>	<b>26</b>	<b>REMAN .....</b>	<b>58</b>
ISOBUS Product Control .....	27	Reman Rapid Repair Program.....	58
ISOBUS Task Controller .....	31		
AccuControl .....	31		
Sidekick Pro Direct Injection System .....	32		
AIM Command FLEX™ .....	33		
Field-IQ™ .....	35		

### ALL-MAKES COMPATIBLE

Whether you have a shed full of Case IH equipment or a mixed fleet, we have precision solutions for you.

**ALL  
MAKES**

#### Mixed Fleet Solutions for:

- John Deere
- Kinze
- New Holland
- AGCO
- Claas
- Massey Ferguson
- Fendt
- McCormick
- White
- And more!

All-makes compatible products are labeled with the all-makes icon throughout this catalog.



# DISPLAYS

## AFS PRO 700

AFS uses a single, integrated display with a common interface across all platforms of your Case IH equipment. The intuitive, customizable, and easy-to-read display allows you to view up to six run screens for controlling key vehicle functions and running AFS applications.

### Display Features

- 10.4" color touchscreen display
- 3 video inputs to monitor implements and grain tank fill, ease vehicle back-up and increase safety
- 6 customizable run screens allow you to configure what you want to monitor and/or control
- ISOBUS Virtual Terminal

### Guidance and Mapping

- AFS AccuGuide™ automated steering
- AFS RowGuide™ combine row guidance
- AFS AccuTurn™ automatic end-of-row turns
- EZ-Pilot Pro and ElectriSteer assisted steering systems
- As-applied and coverage maps for record keeping, analysis and planning



### UPGRADES

#### Additional Features and Upgrades

- |                                   |                              |
|-----------------------------------|------------------------------|
| • ISO Task Controller             | • AFS AccuControl            |
| • AFS RowGuide                    | • MultiSwath+ Line Splitting |
| • AFS AccuTurn                    | • AccuGuide All-Makes        |
| • Advanced Seed Information (ASI) | • Round Baler Automation     |
|                                   | • Feedrate Control           |

### DEMO FEATURES

#### Available Demo Features

- AFS AccuControl
- ISO Task Controller
- Advanced Seed Information (ASI)
- AFS AccuTurn
- AFS RowGuide

## AFS PRO 700

### Equipment Optimization

ISOBUS Class 3 communicates information between the implement and the tractor, allowing the implement to control tractor functions to optimize packaging, bale density, forage quality and bale consistency.

#### Round baler automation

Round Baler Automation improves productivity and reduces operator fatigue utilizing ISOBUS Class 3 Tractor and Baler Automation to automate the baling cycle by:

- Stopping the tractor
- Applying net wrap to the bale
- Raising and lowering the tailgate

#### Feedrate control

Feedrate Control automatically adjusts the tractor's forward speed to maintain a consistent feed rate so you are always baling at the desired capacity. Charge Control Mode uses crop feed readings from the baler to adjust tractor speed to achieve optimum efficiency while Slice Control Mode adjusts the tractor speed to obtain a user defined amount of slices.

- Dramatically reduces operator fatigue
- Increases capacity and productivity by up to 9% compared with an inexperienced or fatigued operator
- Less fuel consumption reduces production cost

### Application Control

#### Prescription variable-rate application

Supports up to 7 products between the implement or vehicle software, ISO Task Controller, AccuControl, or any combination of these.

#### Automatic section control

Supports up to 48 sections independently to minimize skips or overlaps.

#### Advanced seed information (ASI)

Supports real-time monitoring of multiples, singulation, skips and more.

#### AutoBoom™

Automatically adjusts sprayer boom height when changes in terrain are detected.

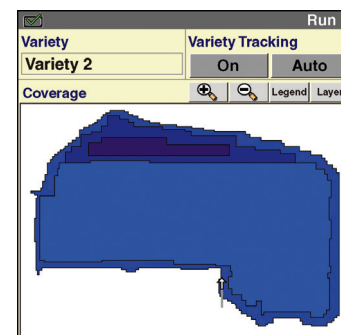
### Harvesting

#### Yield and moisture mapping

Monitors and records yield and moisture data.

#### Variety tracking

Tracks yield and moisture data by hybrid or variety using as-applied planting data.



INTEGRATED AFS PRO 700 DISPLAY	TRACTORS	TILLAGE	PLANTING	SEEDING	SPRAYERS & FLOATERS	HAY & FORAGE	COMBINES	COTTON PICKERS	SUGARCANE HARVESTER
AccuBoom					Optional				
Variable-Rate and Section Control			•	•	• <sup>1</sup>				
AFS AccuGuide Auto Guidance	•	•	•	•	• <sup>2</sup>	•	•	•	•
AFS RowGuide							•		
AFS AccuTurn	•	•	•	•					
AFS ElectriSteer	•	•	•	•	•	•	•	•	•
Camera/Video Display	•	•	•	•	•	•	•	•	•
ISOBUS Compliant Implement Interface			• <sup>3</sup>	•	•	•			
Performance/Productivity Monitoring	•	•	•	•	•	•	•	•	•
Prescriptions			•	•	•				
Summary Data	•	•	•	•	•	•	•	•	•
Moisture Monitoring and Yield Mapping						•	•	•	•

1. Optional on Patriot® sprayers and the 610 Liquid System used with Titan™ floaters.  
 2. Optional on Patriot® sprayers and Titan™ floaters.  
 3. ISO 11783 for non-Case IH planters.

## XCN-2050™



The XCN-2050 display is an advanced, in-cab, multi-touch screen display, built on the Android™ operating system. The intuitive interface makes it easy for both beginning and advanced users to implement precision agriculture solutions.

### Display Features

- 12.3" high-definition color touchscreen display
- Integrated camera with support for an additional external camera
- Customizable tablet-like interface
- Choice of configurations with Precision-IQ™ and FM-1000™ Plus display software

### Guidance and Mapping

- Autopilot™, Autopilot™ Motor Drive, EZ-Pilot™ or EZ-Steer® steering systems
- TrueGuide™ and TrueTracker™ Implement Guidance
- RG-100 Combine Row Guidance
- NextSwath™ end-of-row turn technology
- As-applied and coverage mapping

### Application Control

- Field-IQ™ crop input control:
  - Automatic section control for up to 48 sections
  - Variable-rate control of up to 6 products
- ISOBUS section and variable-rate
- Serial Rate and TUVR (Universal Variable-Rate)



### Harvesting

- Yield monitoring and mapping

### Water Management

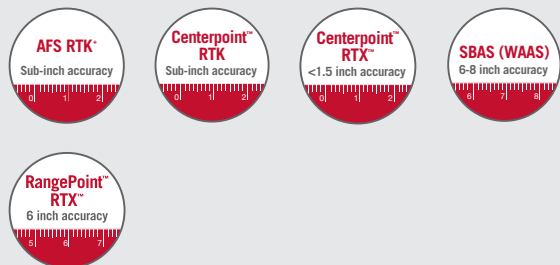
- WM-Drain® farm drainage solution
- FieldLevel™ II land leveling and levee installation

### GNSS Receiver/Antenna

- GLONASS standard
- Upgradable to medium and high accuracy
- Second receiver and RTK radio module option

## GUIDANCE

### Correction Sources and Accuracies



## UPGRADES

### Additional Features and Accuracy Upgrades

#### Features

- FM-1000™ Plus APP
- ISOBUS Task Controller
- Multi-Product Control
- Prescription Variable-Rate
- Serial Rate and TUVR
- NextSwath
- NextSwath Connect
- RG-100 Row Guidance
- TrueTracker™
- TrueGuide™
- Yield Monitoring
- FieldLevel™ II
- WM-Drain®
- WM-Drain Pitch Control
- Vehicle to Vehicle Data Exchange

#### Accuracy Level

- Basic to Medium
- Medium to High
- Basic to High

## XCN-1050™ ALL MAKES

Tackle farming applications for every season and across all your equipment brands with the new XCN-1050 display system with NAV-900. The XCN-1050 display is a sleek, easy-to-use display featuring a quad-core processor and the Precision-IQ™ field application software.

### Display Features

- 10" high-definition color touchscreen display
- Bluetooth® and WiFi capable
- Includes Precision-IQ™ field application software
- Front-facing 1.0 MP camera
- Built-in NTRIP client – connect to AFS RTK+ or VRS networks via cell phone or other internet capable device

### Guidance and Mapping

- Autopilot™, Autopilot™ Motor Drive, EZ-Pilot® Pro, and manual guidance
- NextSwath™ end-of-row turn technology\*

### Application Control

- Field-IQ™ Basic
  - Single liquid product control
  - Up to 24 individually controlled sections
- ISOBUS
  - Universal Terminal (UT)
  - Task Controller (TC) with multi-product control of up to 2 products
  - Section Controller (SC)
- Serial Rate and TUVR (Universal Variable-Rate)

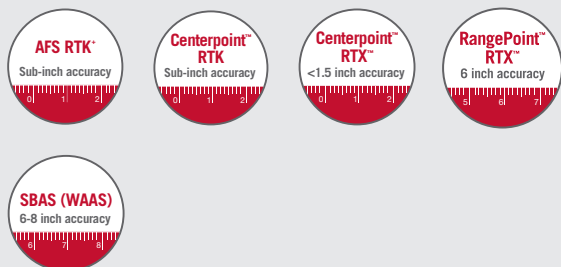


### NAV-900

- Integrates the GNSS receiver and Autopilot™ Guidance Controller in a single, roof-mounted enclosure
- Powerful GNSS receiver supports GPS, GLONASS, Galileo, and Beidou satellite systems
- Delivers faster RTX convergence times and more robust performance in areas where satellite visibility may be obstructed
- Features quick release mounting adapter for Case IH and other brands for easy installation and transfer between vehicles

## GUIDANCE

### Correction Sources and Accuracies



## UPGRADES

### Additional Features and Accuracy Upgrades

#### Features

- NTRIP Correction Client
- Prescription Variable-Rate
- ISOBUS Task Controller
- Serial Rate and TUVR
- ISOBUS Multi-Product Control
- Autopilot™ (CAN install)
- Autopilot™ (Autopilot Motor Drive install)
- NextSwath\*

#### Accuracy Level

- Basic to Medium
- Medium to High
- Basic to High

\* Future release. Not available at launch.

## FM-750™ ALL MAKES

The FM-750 display is an affordable, multi-function guidance display offering key precision agriculture functionality. This intuitive display allows you to easily perform day-to-day farming tasks, extend your operating hours, and enhance productivity on your farm.

### Display Features

- 8.0" color touchscreen display
- Intuitive user interface
- 2 video camera inputs
- Integrated dual-frequency, GLONASS ready GPS receiver

### Guidance and Mapping

- Compatible with Autopilot™, Autopilot™ Motor Drive, EZ-Pilot™, or EZ-Steer® steering systems
- As-applied and coverage mapping

### Harvesting

- Basic yield monitoring and mapping



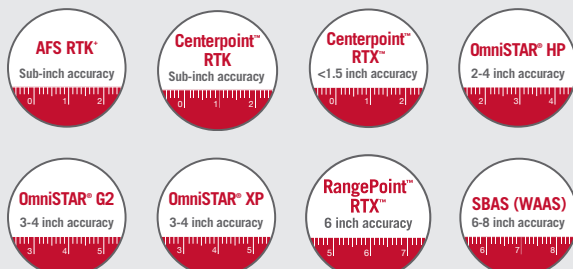
### Application Control

- Field-IQ™ crop input control
  - Automatic section control for up to 48 sections
  - Two product variable-rate application control
- Seed monitoring
- Serial rate and TUVR (Universal Variable-Rate)



## GUIDANCE

### Correction Sources and Accuracies



## UPGRADES

### Additional Features and Accuracy Upgrades

#### Feature Upgrades

- Variable-Rate Control
- Yield Monitoring

#### Accuracy Level

- Basic to Medium GPS Accuracy
- Medium to High GPS Accuracy
- GLONASS Activation



## EZ-GUIDE® 250 ALL MAKES

The EZ-Guide 250 display provides high-quality, entry-level guidance capabilities at an entry-level price. It is well-suited for broadacre crop applications with the standard sub-meter GPS antenna or upgrade to 6-8" pass-to-pass accuracy using the optional AG-15 antenna. Perform manual guidance or add a steering system to make your farming operations easier – day or night.

### Display Features

- Compact 4.3" color display
- One-touch function buttons
- Intuitive user-interface
- USB data transfer
- Integrated GPS receiver

### Guidance and Mapping

- Compatible with the EZ-Steer® assisted steering system
- Coverage mapping



### GUIDANCE AND UPGRADES

#### Correction Sources and Accuracies



6-8" accuracy when used with optional AG-15 antenna

#### Accuracy Upgrade

- AG-15 Antenna for improved WAAS accuracy



## DISPLAY COMPARISON CHART

FEATURES	XCN-2050	XCN-1050	FM-750	EZ-GUIDE 250
Screen Size	12.1" (30.8 cm)	10.1" (25.6 cm)	8.0" (20.3 cm)	4.3" (10.9 cm)
Video Camera Inputs	1	1	2	
Built-In GPS Receiver	•	•*	•	•
Built-In Bluetooth®		•		
Built-In WiFi		•		
GLONASS Compatibility	Standard	Standard	Upgrade	
Automated Steering	•	•	•	
Autopilot Motor Drive	•	•	•	
EZ-Pilot® Pro		•		
Assisted Steering	•		•	•
Row Guidance	•			
Implement Guidance	•			
ISOBUS Universal Terminal	•	•		
ISOBUS Task Controller	•	•		
ISOBUS Multi Product Control	•	•		
Serial/TUVR Support	•	•	•	
Variable-Rate Application	•	•	•	
Automatic Section Control	•	•	•	
Seed Monitoring	•	•	•	
Water Management	•			
Yield Monitoring	•		•	
Trimble App Central	•	•		
Vehicle Sync	•			
NextSwath End-of-Row Turn	•	•		

\* In the NAV-900

## CAMERA KITS AND ACCESSORIES

### Adapter Cables

#### AFS Pro 700 Display Adapter Cable†

Part No. ZAE31200043

- Works with any Voyager camera
- Allows for up to 3 camera inputs



Pro 700 Display

Part No. ZAE31200043

#### XCN-2050™/XCN-1050™/FM-1000™/FM-750™ Display Adapter Cable†

Part No. ZAE31100083HD

- Works with any Voyager camera



FM-750 Display

Part No. ZAE31100083HD

#### Raven Viper Display Adapter Cable†

Part No. ZAEVOSRAVEN

- Works with any Voyager camera



Part No. ZAEVOSRAVEN

Raven Viper Display

#### Universal Camera Mount

Part No. ZAEUCMNTHD

Allows mounting of the ZAEVCMS155BHD camera to a round railing or a flat surface as well as turn and adjust the camera to virtually any angle.



### Extension Cables

#### Voyager Extension Cables

25' – Part No. ZAECEC25HD

50' – Part No. ZAECEC50HD

75' – Part No. ZAECEC75HD

- Noncorrosive locking connectors with 4-pin round plug
- Fully weatherproof connectors on both ends allows multiple “daisy chain” connections up to 200 ft. max.
- Camera cable is impervious to chemicals, oils, gasoline, salt, etc.



Part No. ZAECEC75HD



Part No. ZAECEC25HD

† If non-mirrored image is required you must use Part No. ZAEVCMS155BHD camera.

## CAMERA KITS AND ACCESSORIES

### Cameras

#### Super CMOS Cylinder Color Observation Camera

Part No. ZAEVCMSYL50i

- Electronic iris
- Waterproof (IPX7)
- 12 volt DC power
- Viewing angle: 131°
- Low-light enhancement (0 Lux with IR LED on)
- Image orientation: mirror (reversed)
- Rugged machined aluminum body
- 1.25"W × 1.25"H × 1.5"D

#### Voyager Rear Color Camera

Part No. ZAEVCMS17B

- High-performance color optics
- Waterproof (IP69K)
- 12 volt DC power
- Image orientation: mirror (reversed)
- Excellent low light and bright daylight performance
- 12 IR LEDs
- Microphone
- 2.76"W × 1.76"H × 2.07"D

#### Voyager CMOS Color Camera

Part No. ZAEVCMS20BHD

- Electronic iris
- Waterproof (IPX69)
- 12 volt DC power
- Viewing angle: 140°
- Low-light enhancement (0 Lux with IR LED on)
- Microphone
- Image orientation: mirror (reversed) and normal
- 2.7"W × 1.7"H × 5"D



### Combine DIA Kits

PART NO.	APPLICATIONS
47635060	7230, 8230, 9230 - (MY 13 and Older) with Pro 700 Display
47635059	7010, 8010, 7120, 8120, 9120 with Pro 700 Display
47635058	5088, 6088, 7088, 130 and 140 Series with Pro 700 Display
47694736	5130, 6130, 7130, 5140 (T4), 6140 (T4), 7140 (T4) - Model Year 2014



Part No. 47694736

#### Features

Efficient monitoring of:

- **Grain Tank** – Monitor fill level
- **Auger** – More effectively unload on the go
- **Backup** – View behind the combine for potential hazards or obstructions

Prewired inside the cab for ease of installation

#### Includes

- 3 Voyager CMOS color cameras
- Cabling and installation hardware



# RECEIVERS AND CORRECTION SERVICES

## AFS 372 ALL MAKES

The AFS 372 GNSS receiver is a high-performance, dual-frequency GPS and GLONASS smart antenna/receiver. Combining GPS and GLONASS significantly increases the number of satellites available to the receiver at any one time, resulting in increased uptime during crucial field operations.



### Receiver Features

- GLONASS enabled at each correction level where supported by the correction service
- Common mounting and cabling as the AFS 252 and AFS 262
- Supports RTK corrections transmitted by radio or cellular modem
- xFill™ technology to enhance reliability and robustness of RTK operation
- Available in three accuracy levels: basic, medium and high

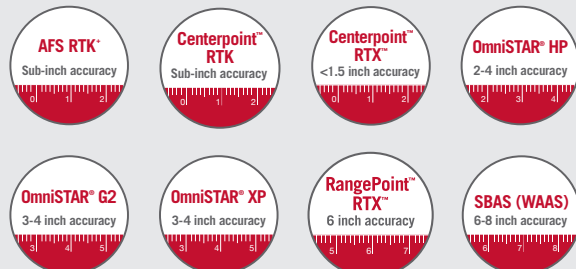
### Accuracy Across Your Operation

The AFS 372 receiver is easily transferred between vehicles and can be used across your entire fleet:

- Use with the AFS Pro 700 or AFS Pro 300 display and AFS AccuGuide for reliable automated steering
- Spatially record important as-applied and harvest yield and moisture data
- Add to third-party displays or use in stand-alone applications

## GUIDANCE

### Correction Sources and Accuracies



## UPGRADES

### Accuracy Licenses

- Basic to Medium GNSS Accuracy
- Medium to High GNSS Accuracy
- Basic to High GNSS Accuracy

## AFS ACCUSTAR

Whether you are looking to add ElectriSteer to your operation or simply need a receiver for yield monitoring, the AFS AccuStar receiver is the perfect solution. From WAAS to the ultra-accurate AFS RTK<sup>+</sup>, whatever your accuracy needs, the AFS AccuStar delivers.

### Receiver Features

- Basic, medium, and high-accuracy options available to meet your specific needs
- Utilizes GPS and GLONASS satellites in position calculation
- Advanced GNSS position smoothing filter improves pass-to-pass accuracy and minimizes position drift

### Accuracy Across Your Operation

The AFS AccuStar receiver can be used to add accuracy across your operation:

- Use with the AFS Pro 700 or AFS Pro 300 display and ElectriSteer to add assisted steering to your Case IH or non-Case IH vehicle
- Spatially record important as-applied and harvest yield and moisture data
- Add to third-party displays or use in stand-alone applications
- Compatible with N-Trip delivered RTK corrections (RTCM 3.X) such as AFS RTK<sup>+</sup>



### AFS 1 and AFS 2 Corrections

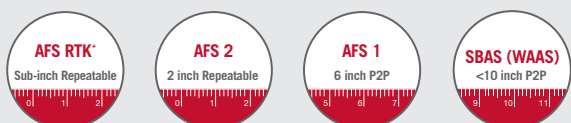
Available exclusively from your Case IH dealer, AFS 1 and AFS 2 are satellite delivered correction options for the AFS AccuStar receiver.

CORRECTION*	ACCURACY		CONVERGENCE	SUBSCRIPTION DURATION
	PASS TO PASS	REPEATABLE		
AFS 1	+/- 6" (15 cm)	+/- 20" (50 cm)	< 5 Minutes	1 Year
AFS 2	+/- 2" (5 cm)	+/- 2" (5 cm)	< 30 Minutes	3 Month, 1, 2, and 3 Year

\* Only available for the AccuStar receiver.

### GUIDANCE

#### Correction Sources and Accuracies



### UPGRADES

#### Accuracy Licenses

- Basic to Medium GNSS Accuracy
- Medium to High GNSS Accuracy
- Basic to High GNSS Accuracy

#### Demo

- 7-Day Basic to High GNSS Accuracy Demo
- 5-Day AFS 1 or AFS 2 Correction Demo

## RTK CONNECTIVITY OPTIONS

### AG-715 RTK RADIO

The AG-715 integrated radio was designed exclusively for use with the AFS 372 GNSS receiver, providing access to high-precision RTK networks.

- The compact AG-715 design mounts easily under the AFS 372 GNSS receiver
- Available in 900, 430-450, and 450-470 MHz frequency ranges



### AM-53 MODEM

The AM-53 Modem transports NTRIP correction data via cellular from a correction source such as the AFS RTK+ network or other CORS/VRS service.

- Common modem with AFS Connect
- Dual GSM/CDMA SIM standard
- Easily configured through the AFS Pro 700



### NMEA-BT BLUETOOTH DEVICE

The NMEA-BT Device connects compatible AFS 372 receivers via Bluetooth® to your iOS device such as an iPhone® or iPad®, allowing the utilization of the cellular data from that device to provide cellular NTRIP RTK corrections such as AFS RTK+ to the receiver.

- Free NTRIP/RTK client app for iOS
- Use the cellular provider of your choice
- Long-range Bluetooth – over 100M operating range between NMEA-BT Device and iOS device
- Supports data transfer rates up to 115.2 Kbps



### AG-820 RTK RADIO

The AG-820 radio was designed for use with the NAV-900 GNSS receiver and guidance controller, providing access to radio-based RTK networks.

- The self-contained external radio connects via a single cable
- Magnetic base allows for easy installation on vehicle cab roof
- Available in 900, 430-450, and 450-470 MHz frequency ranges



### SNM941 CONNECTED SITE GATEWAY

The SNM941 Connected Site Gateway enables Vehicle Sync to be used with the FM-1000 display and XCN-2050 display (with FM-1000 Plus App).

- Use with Vehicle Sync to easily share data between vehicles (XCN-2050 running the FM-1000 Plus App and FM-1000 displays only)
- NTRIP support for XCN-1050 via WiFi and for AFS 372 via serial
- Compatible with cellular NTRIP RTK corrections such as AFS RTK+
- Enables Vehicle Sync to be used in fleets that also contain legacy DCM-300 modems



## RTK CONNECTIVITY OPTIONS

### GX450 WIFI MODEM

With 4G/LTE support and 3G backup, the GX450 Modem provides excellent connectivity for cellular RTK corrections.

#### Features

- 4G/LTE compatible with Verizon, AT&T®, Sprint®, T-Mobile® USA, US Cellular®, Rogers, Bell, Telus carriers
- 2.4 GHz WiFi providing access for up to 8 clients simultaneously
- AFS RTK+ compatible
- LED lights for simple diagnostics of power, activity, signal, and network

#### Advantages

- Bring your own data plan, giving you the flexibility to choose the plan that best fits your operation
- The compact size allows the GX450 to be easily mounted in the vehicle cab
- Easily configurable through the AFS Pro 700 when used with the AFS 372 GNSS receiver
- Utilize built-in WiFi to connect internet capable devices in the cab



### COMPATIBILITY

#### Compatible with:

- AFS Pro 700
- XCN-2050™
- FM-1000™
- XCN-1050™
- FM-750™
- AFS 372



## AFS RTK+

Cellular-based correction available exclusively from your Case IH dealer:

- High accuracy and availability in North America
- Fast connection everywhere and at any time
- Flexibility for a single subscription for unlimited access; compatible with all hardware
- Supports profitability in all your farming tasks (seeding, fertilizing, spraying) thanks to the signal's sub-inch accuracy
- Simplicity with a single contact for your hardware and correction signal
- Quality and reliability backed by the Case IH support team

### Multi-Brand Compatibility\*

Regardless of the brand, you get instant access to the high-precision AFS RTK+ network without having to manually switch from one reference station to another.

### Fast and Reliable Connection

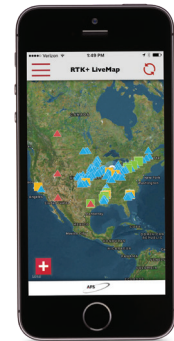
The AFS RTK+ network has a large number of RTK reference stations installed in North America – so a GPS signal is always available.

### Sub-Inch Accuracy

Regardless of the geographic position of your field, you can connect to the AFS RTK+ network. It offers sub-inch accuracy, with a very short connection time.

### Download the Mobile App

Keep track and monitor the status of your fleet from your mobile phone. The AFS RTK+ app is available for Android and iOS – download for FREE from the Google Play Store or Apple Store:



- Monitor your equipment and see surrounding reference stations
- Zoom in to see a specific vehicle or reference station
- View details of a vehicle or reference station
- Use list mode to see the active vehicles and filters



iOS



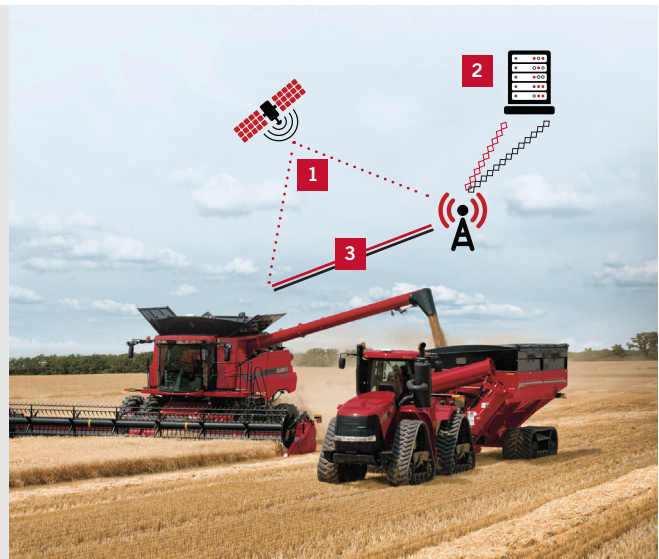
Android

### How Does It Work?

- 1** A connection is made between the satellites, your vehicle and the AFS RTK+ network
- 2** The information goes back to the central server for analysis of the data
- 3** The correction is sent to your vehicle instantly via cellular networks, which gives you sub-inch accuracy

Wherever you are, the correction is calculated from the surrounding network stations.

**Contact your local Case IH dealer to determine if your area has AFS RTK+ coverage.**



\* Currently not compatible with John Deere's proprietary NCT data format.



## CORRECTION SERVICES

Case IH offers a number of corrections with three types of delivery so you can choose what is best for your operation.

### Correction Accuracy and Initialization

CORRECTION OPTIONS	DELIVERY METHOD	ACCURACY						INITIALIZATION/CONVERGENCE			
		<1"	1.5"	+/- 2"	2-4"	3-4"	6"	<1 min	<5 min	<30 min	<45 min
AFS RTK+		█						█			
AFS 2		█	█					█	█		
AFS 1		█	█	█				█	█		
CenterPoint™ RTK		█						█			
CenterPoint™ RTX™		█						█*	█**		
OmniStar® HP		█	█	█				█	█		
OmniStar® XP		█	█	█	█			█	█		
OmniStar® G2		█	█	█	█			█	█		
RangePoint RTX		█	█	█	█			█	█		
WAAS		█	█	█	█	█		█	█		

\* CenterPoint RTX FAST initialization/convergence <5 min

\*\* CenterPoint RTX STANDARD initialization/convergence <30 min

### Delivery Method Applications

DELIVERY METHOD	REQUIRES
	Open views of the sky at all times
	Reliable cellular coverage is available
	Established RTK base station within 8 miles

### Pass to Pass

FIELD OPERATIONS	< 1"	+/- 1.5"	+/- 2-4"	+/- 6"
Spraying	█	█	█	█
Spreading	█	█	█	█
Field Preparation	█	█	█	█
Mapping	█	█	█	█
Harvesting	█	█	█	█
Seeding	█	█		
Planting	█	█		
StripTill	█			
Water Management	█			





# AUTO GUIDANCE AND MACHINE CONTROL

## ACCUGUIDE™ AUTOMATED GUIDANCE SYSTEM

Advance your operation with AFS AccuGuide. AccuGuide is available to be integrated into your Case IH tractor, combine, windrower, or sprayer from the factory, or can be easily retrofitted on any AccuGuide-ready equipment. AccuGuide is also available for many older Case IH models.

### Features

- Fully integrated auto guidance control system ensures parallel pass-to-pass swaths to eliminate skips and overlap
- Delivers accuracy as precise as sub-inch with the AFS 372 GNSS receiver
- Controlled through the AFS Pro 700 touchscreen display which can monitor machine functions and run precision applications in addition to controlling AccuGuide
- Uses T3 terrain compensation for maintaining accuracy in rolling terrain

### AFS AccuGuide All-Makes

- AFS AccuGuide for older Case IH and other brand tractors and sprayers
- Utilizes the AFS Pro 700 display so a single display can be used for autoguidance and precision farming functions such as operating a Case IH planter

### Advantages

- Maximizes productivity and efficiency across your operation
- Saves on seed, fertilizer, chemicals and other inputs by minimizing skips and overlaps
- Minimizes field compaction and further improves agronomic performance using controlled-traffic patterns
- Reduces operator fatigue
- All-makes packages are also available and can be integrated into most brands and models of equipment

### AFS ACCUGUIDE COMPATIBILITY

#### Compatible with:

- AFS AccuTurn\*
- AFS Pro 700 display
- AFS RowGuide™\*
- AFS 372 GNSS receiver
- MultiSwath+ Line Splitting

\* Not compatible with AccuGuide All-Makes.

## AFS ACCUTURN



AFS AccuTurn works with AFS AccuGuide to provide hands-free steering for automatic, repeatable end-of-row turns – maximizing a vehicle's turning accuracy and overall efficiency while reducing operator fatigue. AFS AccuTurn improves yield potential by ensuring agronomically correct field layouts that can be precisely followed during every phase of the crop production cycle.

### Features

- Intuitive speed and distance indicator
- Displays time and distance countdown to the upcoming turn
- Displays a vehicle speed threshold for the planned turn

### Advantages

- Continuously projects and customizes the vehicle's turn path
- Plans turning paths in irregular-shaped fields
- Uses implement positioning as a reference point to trigger a turn
- Ensures that the implement is square after every turn



### Fully Customizable

- Choose between multiple turn triggers including headlands, field boundaries or end-of-swath
- Make early or late turns
- Skip up to 12 swaths
- Customize turn path to optimize positioning for re-entry when using trailing implements with a long hitch

### COMPATIBILITY

#### Compatible with:\*

- Steiger® series tractors
- Magnum™ series tractors
- Optum® series tractors
- Puma® series tractors
- Maxxum® series tractors
- Patriot® series sprayer

\* AFS AccuTurn is compatible with Case IH 2011 – current model vehicles. Vehicles must be equipped with AFS AccuGuide and include an AFS Pro 700 display, AFS 262/372 receiver and a NAV II/III controller.

## AFS ROWGUIDE™

AFS RowGuide works with AFS AccuGuide on combines to provide accurate, hands-free steering during corn harvest to achieve and maintain accurate row positioning in ever-changing harvest conditions, thereby reducing operator fatigue.

### Features

- Utilizes dual sensors mounted directly to the corn head dividers
- Maintains performance in fields planted with or without guidance
- Provides seamless transition between row guidance and GPS guidance when a corn row is not detected

### Advantages

- Reduced fatigue, allowing for longer operating hours
- More consistent feeding with header centered on stalks
- Automatic selection of new headland
- Ability to navigate through down corn
- Accurate guidance across waterways



### COMPATIBILITY

#### Compatible with:

- AFS Pro 700 display
- AFS 372 GNSS receiver

## EZ-PILOT® PRO

The EZ-Pilot® Pro guidance system offers high accuracy guidance across many vehicle types and brands, and at an affordable price. Combining EZ-Pilot simplicity with the high performance of the NAV-900 results in an easy-to-install assisted steering option for your vehicle with up to sub-inch repeatability.

### Features

- Reverse operation for up to 15 seconds
- OnSwath™ Line Acquisition
- Utilizes terrain compensation technology from the NAV-900 for precision control
- Stay engaged while stopped
- Fewer components

### Advantages

- Reverse operation allows you to line up for the next swath with highly accurate positioning so you are on line as soon as your implement enters the ground
- Incorporating advanced line acquisition features and settings allows you to customize how your vehicle engages the line
- The NAV-900 allows the guidance system to have precise control which is especially important for high value crops
- Stop-and-go applications are easier than ever when you don't have to re-engage your guidance each time you stop
- Reduced hardware makes transferring between vehicles quick and easy



### COMPATIBILITY

#### Compatible with:

#### Displays

- XCN-1050™
- AFS Pro 700



## AFS ELECTRISTEER ALL MAKES

The Case IH ElectriSteer universal steering motor works with the AFS Pro 300 or Pro 700 display to provide an assisted steering solution for a variety of new and legacy Case IH equipment as well as other brand vehicles.

### Features

- Custom mounting kits tailored for each specific supported vehicle
- Operating speeds: 1.0 to 15+ MPH
- Reverse operation

### Advantages

- Easy installation utilizing existing steering wheel
- Easily transfers from vehicle to vehicle with available transfer kit
- Common user interface and precision farming functions such as AFS AccuGuide
- Meets OEM performance and durability requirements

### Motor Drive Unit (MDU)

- High-torque, positive-gear drive delivers whisper-quiet operation
- High-speed motor provides quick correction response
- Manual switch quickly engages or disengages for road transport
- Split-ring assembly design allows for installation and removal

### Electronic Control Unit (ECU)

- Onboard compass to determine vehicle heading and allows for reverse operation
- Built-in inertial measurement unit to measure roll/pitch/yaw terrain compensation



### Receiver Compatibility

- The ElectriSteer is compatible with the AccuStar, the AFS 372, and the AFS 262 receivers
- Upgradeable to medium and high accuracy
- Choice of correction signals:
  - AFS 372/262: AFS RTK+, RTK, RTX, OmniSTAR, WAAS
  - AccuStar: AFS RTK+, AFS 1, AFS 2, WAAS

### Applications

- Supports a variety of Case IH makes and models, as well as many competitive vehicles
- For more information regarding machine compatibility, please contact your local Case IH dealer

### ElectriSteer Minimum and Maximum Speeds

VEHICLE TYPE	MIN SPEED (MPH)	MAX SPEED (MPH)	MAX ENGAGE SPEED (MPH)
Articulated	1	20	12
Combine	1	15	9
Sprayer	1	28	20
Track	1	20	12
Floater	1	28	20
MFWD	1	20	13

## COMPATIBILITY

### Compatible with:

#### Receivers

- AFS AccuStar
- AFS 372
- AFS 262

#### Displays

- AFS Pro 700
- AFS Pro 300



## AUTOPILOT™ AUTOMATED STEERING SYSTEM ALL MAKES

Autopilot automatically steers your vehicle on-line with maximum precision. When your vehicle gets offline, Autopilot signals it to adjust its position to follow the correct path, no matter the field pattern or terrain type – so you can focus on the job ahead of you.

### Features

- Provides automatic steering for your vehicle with sub-inch repeatability
- Integrates directly into your vehicle's hydraulics for clear access to cab control
- Utilizes terrain compensation technology for high accuracy on difficult terrain
- Ideal for the most demanding row crop farming applications
- Plugs in to many guidance-ready vehicles, minimizing the need for additional equipment

### Advantages

- Complete field applications quickly and accurately
- Reduce operator fatigue and increase safety
- Operate day or night and in dusty or low visibility conditions

### Terrain Compensation Technology

Autopilot uses T3™ sensors to calculate the actual position of the vehicle to help minimize skips and overlaps in areas with rolling terrain, slopes, and rough ground.

### OnSwath™ Line Acquisition Technology

OnSwath line acquisition technology allows Autopilot users to customize line acquisition preferences to the vehicle and field operation at hand. Using OnSwath the vehicle projects its path to the line, which allows it to get back online faster.

### NextSwath™ End-of-Row Turn Technology

NextSwath end-of-row turn technology, optional on the XCN-2050™ display, will automatically calculate and execute the best possible path to turn around a vehicle and approach the next crop row or swath with the implement precisely aligned to begin working.

## COMPATIBILITY

### Compatible with:

#### Auto Guidance

- TrueTracker™ Implement Steering
- TrueGuide™ Implement Steering
- RG-100 Row Guidance

#### Displays

- XCN-2050™
- XCN-1050™
- FM-1000™
- FM-750™



## AUTOPILOT™ MOTOR DRIVE AUTOMATED STEERING SYSTEM

Autopilot Motor Drive is an electric, hands-free, automated steering system that delivers highly accurate, Autopilot-level steering with the ease of installation of the EZ-Pilot® system. No matter your vehicle type or brand, the Autopilot Motor Drive system can be quickly transferred from one vehicle to another.

### Features

- Simple installation
- Highly accurate automated steering capable of sub-inch accuracy
- Slow speed and reverse operation

### Advantages

- Less time and cost to install than traditional hydraulic steering solutions
- Ideal for most row crop and any broad-acre farming applications
- Easily transfer between vehicles



### Terrain Compensation Technology

Autopilot Motor Drive uses T3™ sensors to calculate the actual position of the vehicle to help minimize skips and overlaps in areas with rolling terrain, slopes, and rough ground.

### COMPATIBILITY

#### Compatible with:

##### Auto Guidance

- TrueTracker™ Implement Steering
- TrueGuide™ Implement Steering
- RG-100 Row Guidance

##### Displays

- XCN-2050™
- XCN-1050™
- FM-750™

## RG-100 ROW GUIDANCE

With the RG-100 row guidance system, you can automatically adjust the combine in response to changes in the rows by using existing sensors built in to the combine head. The RG-100 system uses the Autopilot™ and Autopilot Motor Drive Systems to center the combine on the rows – even when they are not straight.

### Features

- Uses existing row guidance sensors to sense the position of the combine
- Works with the Autopilot and Autopilot Motor Drive Systems to automatically steer your combine along rows
- Utilizes terrain compensation technology for high-accuracy steering in rolling hills, slopes, and rough terrain

### Advantages

- Increase corn yield through reduced ear loss
- Reduces operator fatigue in difficult conditions such as down corn, curved rows, long passes, and other poor visibility conditions
- Operate effectively in fields planted using other steering systems or in areas where the planter drifted



### COMPATIBILITY

#### Compatible with:

##### Auto Guidance

- Autopilot™
- Autopilot™ Motor Drive Systems

##### Display

- XCN-2050™

## EZ-PILOT®

The EZ-Pilot assisted steering system is a high-performance, low-cost assisted steering solution that is sleekly integrated into the vehicle's steering column and can be installed on most brands and models of tractors and harvesting equipment. EZ-Pilot utilizes an integrated electric motor drive for high accuracy at an affordable price.

### Features

- Provides hands-free guidance for your many farm vehicle types
- Integrates directly into the steering column for clear access to cab control
- Allows for unrestricted manual steering when assisted steering is not engaged
- Utilizes terrain compensation technology for high accuracy on difficult terrain
- Ideal for both low-accuracy broadacre and high-accuracy row-crop farming applications



### Advantages

- Maximizes uptime: complete field operations quickly and accurately
- Fast-reacting motor allows system to quickly get the vehicle online and stay there
- Reduces operator fatigue and increases safety
- Operates day or night and in dusty or low-visibility conditions

### Terrain Compensation Technology

EZ-Pilot uses T3™ sensors to calculate the actual position of the vehicle to help minimize skips and overlaps in areas with rolling terrain, slopes, and rough ground.

## EZ-STEER®

The EZ-Steer assisted steering system provides simple, portable, hands-free farming for more than 1,200 vehicle models – old and new. The EZ-Steer system turns the steering wheel for you by combining a friction wheel and motor. It keeps your vehicle in line for efficient, low-stress steering capabilities for your farming applications.

### Features

- Provides hands-free guidance for your many farm vehicle types
- Allows for unrestricted manual steering when disengaged
- Utilizes terrain compensation technology for high accuracy on difficult terrain
- Easy to install and transfer between vehicles
- Ideal for broadacre farming applications where extremely accurate positions are not required



### Advantages

- Completes field applications quickly and accurately
- Reduces operator fatigue and increases safety
- Operates day or night and in dusty or low-visibility conditions

### Terrain Compensation Technology

EZ-Steer uses T2® sensors to calculate the actual position of the vehicle to help minimize skips and overlaps in areas with rolling terrain, slopes, and rough ground.

## EZ-PILOT/EZ-STEER COMPATIBILITY

### Compatible with:

#### EZ-Pilot Displays

- XCN-2050™
- FM-750™
- FM-1000™

#### EZ-Steer Displays

- XCN-2050™
- FM-750™
- EZ-Guide® 250



## TRUETRACKER™ ALL MAKES

TrueTracker is an active implement guidance system that keeps your tractor and implement on the same guidance line. When the implement drifts, the Autopilot automated steering system signals your implement to independently adjust its position to follow the correct path, allowing the implement to correct itself without any compensation from the tractor.

### Features

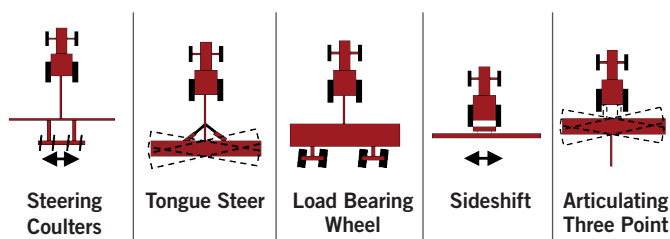
- Allows the implement to correct its position without input from the tractor
- Utilizes terrain compensation technology for high accuracy on difficult terrain
- Ideal for row crop and multiple-pass applications

### Advantages

- Accurately steers the implement and tractor on a repeatable path
- Operates in difficult terrain and variable soil conditions
- Minimizes drift and results in more consistent guess rows
- Reduces crop damage and compaction
- Improves seedbed and nutrient placement

### Terrain Compensation Technology

TrueTracker utilizes T3™ sensors to calculate the actual position of the vehicle to help minimize skips and overlaps in areas with rolling terrain, slopes, and rough ground.



## TRUEGUIDE™ ALL MAKES

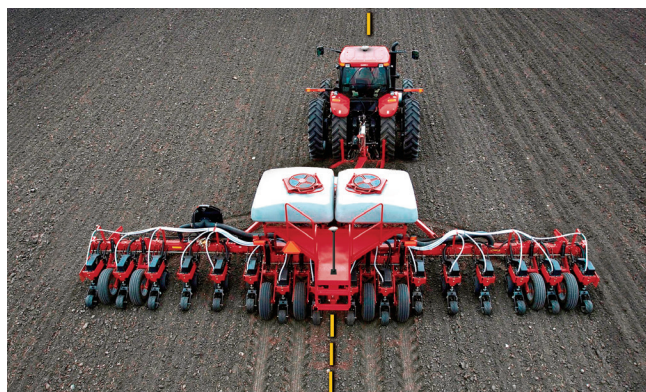
Control your implement with the TrueGuide implement guidance system — a passive guidance system that monitors and corrects the position of your implement with compensation from your tractor.

### Features

- Adjusts the implement's location to the line with movement from the tractor
- Ideal for broadacre crop applications in which multi-pass repeatability is not required
- Uses the existing Autopilot™ or Autopilot™ Motor Drive System – only requires a GNSS antenna on the implement
- Terrain compensation for roll

### Advantages

- Reduces uncontrolled drift of the implement by more than 50% over guiding the tractor alone
- Increases your precision with input placement



### TRUEGUIDE/TRUETRACKER COMPATIBILITY

#### Compatible with:

#### Auto Guidance

- Autopilot™
- Autopilot™ Motor Drive

#### Display

- XCN-2050™



# SECTION AND RATE CONTROL

## APPLICATION CONTROL SYSTEMS

Precision application systems allow you to control your application of products to reduce input costs while positively impacting yields and your bottom line.

### Automatic Section Control

Automatically shuts off rows or sections, eliminating double applications of seed and fertilizer. Using GPS, the planter, sprayer, or other applicator automatically turns on and off individual sections or rows in areas that have already been applied or in areas that you don't want to apply such as waterways or outside the field boundaries.



### Variable-Rate Application Control

Your fields have varying soil types, fertility, and other characteristics. Why treat the whole field the same? Automatic variable-rate application utilizes GPS and prescriptions to control the rate throughout different zones in the field, applying more where needed and less where it is not. This allows you to save on inputs and get the most from those areas of the field that have the highest yield potential.



## ISOBUS PRODUCT CONTROL

AFS® ISOBUS Product Control gives you the power to view your implement on your ISO-compliant display via a virtual terminal and control your implement's necessary functions at the touch of a finger. AFS ISOBUS Product Control is compatible with many ISO-enabled displays and supports a variety of field applications, making it a great solution for the mixed fleet grower.

### Features and advantages

- Installs in minutes
- Easy user interface
- One-time setup
- Settings automatically transfer from machine to machine
- Plug n' play with your existing ISOBUS-compliant display
- Ability to perform variable-rate, section control, prescriptions, and as-applied mapping

### ISOBUS product control platforms

- Strip-till and air cart
- Planter
- Dry spreader
- Liquid fertilizer/anhydrous ammonia
- Slurry
- Sprayer
- Weather station

### Strip-Till and Air Cart Application System

Whether you are wanting to control seed, granular, liquid, or all 3, the strip-till and air cart application system can manage it all through a single controller.

### Viewable parameters

- Target and actual application rate
- Fan speed
- Hopper pressure
- Meter RPM's

### Additional functionality

- Blockage monitoring support
- Bin chaining – parallel or sequential
- Bin level (3 bins)
- Blower pressure (3 sensors)
- Scale support
- Fan RPM speed monitoring (2 fans)

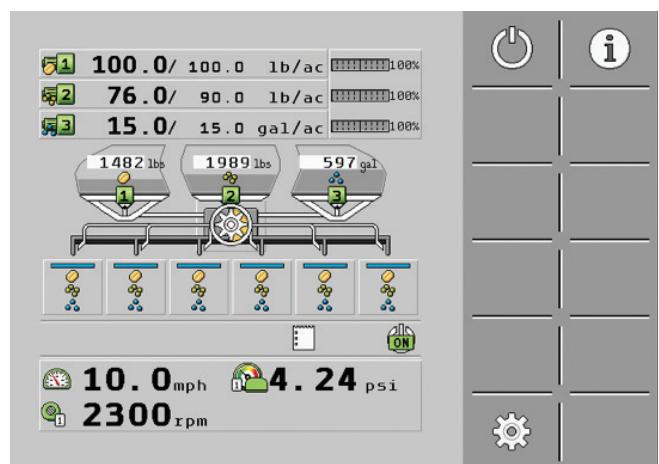


### COMPATIBILITY

#### Compatible with:

#### Displays

- AFS Pro 700
- XCN-2050™
- XCN-1050™
- New Holland IntelliView™ IV
- John Deere 2630
- John Deere Generation 4
- Mueller TOUCH800® and TOUCH1200®
- Ag Leader Integra



### SYSTEM INFORMATION

Products Controlled	3
Product Control Type	Manual or Prescription Variable-Rate
Section Control	Yes – 10 Sections
As-Applied Mapping	Yes
Supported Valve Types	PWM
Compatible Harnessing	N/A

## ISOBUS PRODUCT CONTROL

### Planter Application System

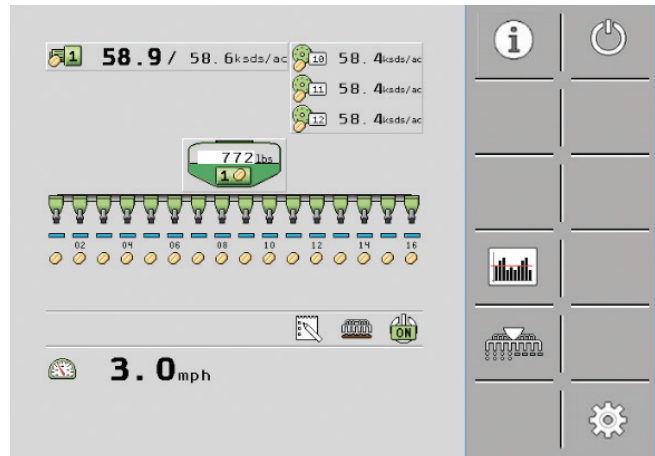
Gain visibility to advanced seed statistics such as population, singulation, spacing, and skips or multiples as well as control up to 16 planter sections with the ISOBUS Planter Application System.

#### Viewable parameters

- Advanced seed statistics for up to 16 rows
- Planter and row-by-row statistics including:
  - Population
  - Singulation
  - Spacing
  - Skips/multiples
- 60-second histogram available for all row statistics

#### Additional functionality

- Section control for up to 16 sections
- Bin level (2 bins)
- Fan pressure support (1 sensor)
- Split-row/interplant toolbars up to 16 rows
- As-Applied Mapping



#### SYSTEM INFORMATION

Products Controlled	0
Product Control Type	N/A
Section Control	Yes – 16 Sections
As-Applied Mapping	Yes
Supported Valve Types	N/A
Compatible Harnessing	PM Direct Plug (DJ), CT Adaptor (JD)

### Dry Spreader Application System

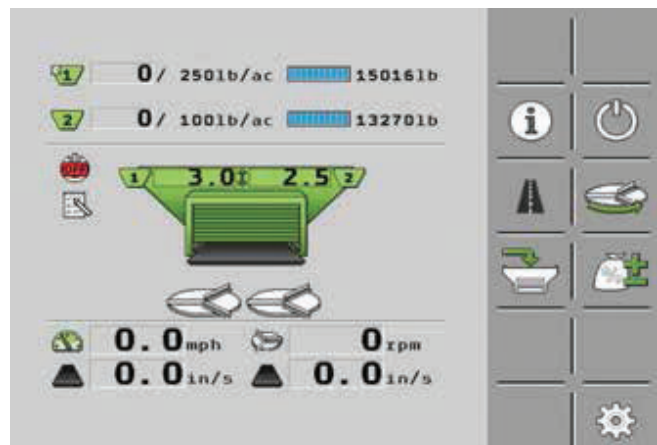
Whether you want to utilize variable-rate capabilities or control your rate manually, this intuitive interface has everything you need to accurately and easily manage your spreader application.

#### Viewable parameters

- Dual bin actual/target application rate
- Gate heights and spinners on/off
- Ground speed, belt speeds, and spinner RPM

#### Additional functionality

- Spinner/fan control
- Distributor control
- Application counters
- Bin chaining
- Bin level (3 bins)



#### SYSTEM INFORMATION

Products Controlled	3
Product Control Type	Manual or Prescription Variable-Rate
Section Control	Yes
As-Applied Mapping	Yes
Supported Valve Types	Servo or PWM
Compatible Harnessing	Raven 660 and Field-IQ

## ISOBUS PRODUCT CONTROL

### Liquid Fertilizer and Ammonia Application System

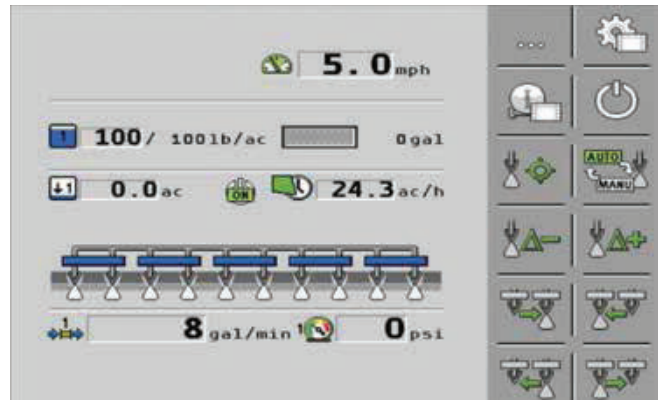
Cover more ground with less fertilizer with the section control and variable-rate capabilities of the liquid fertilizer application system.

#### Viewable parameters

- Speed
- Actual rate and gallons remaining
- Acres to empty and area/hour
- Flow rate

#### Additional functionality

- Liquid injection
- Application counters
- Tank level (liquid only)



#### SYSTEM INFORMATION

Products Controlled	2
Product Control Type	Manual or Prescription Variable-Rate
Section Control	Yes – 10 Sections
As-Applied Mapping	Yes
Supported Valve Types	Raven, KZ, Dickey-John
Compatible Harnessing	Raven 4X0, 4XX0, and Field-IQ

### Sprayer Application System

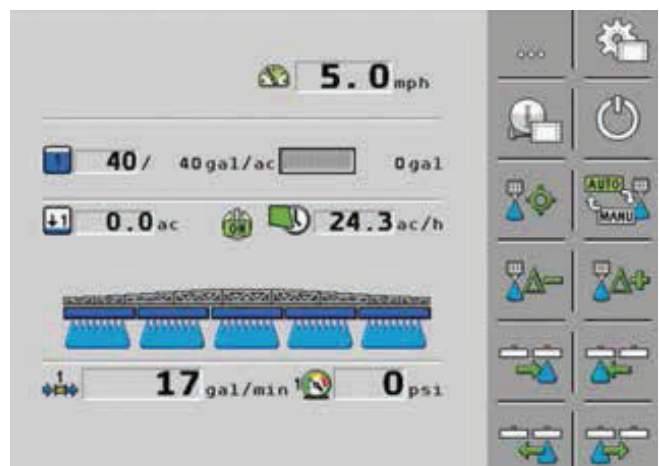
The Sprayer Application System provides a live view of your sprayer's performance with up to 10 boom section control for manual or variable-rate application.

#### Viewable parameters

- Speed
- Actual rate and gallons remaining
- Acres to empty and area/hour
- Flow rate

#### Additional functionality

- Application counters



#### SYSTEM INFORMATION

Products Controlled	2
Product Control Type	Manual or Prescription Variable-Rate
Section Control	Yes – 10 Sections
As-Applied Mapping	Yes
Supported Valve Types	Raven, KZ, Dickey-John
Compatible Harnessing	Raven 4X0, 4XX0, and Field-IQ

## ISOBUS PRODUCT CONTROL

### Slurry Application System

ISOBUS Slurry Application System gives you full control of your slurry tanker. Whether you wish to use section control for two booms or 10, this application system has you covered.

#### Viewable parameters

- Speed, gallons/acre, tank level
- Virtual tank gauge
- Application rate

#### Additional functionality

- Application counters, tramlines



#### SYSTEM INFORMATION

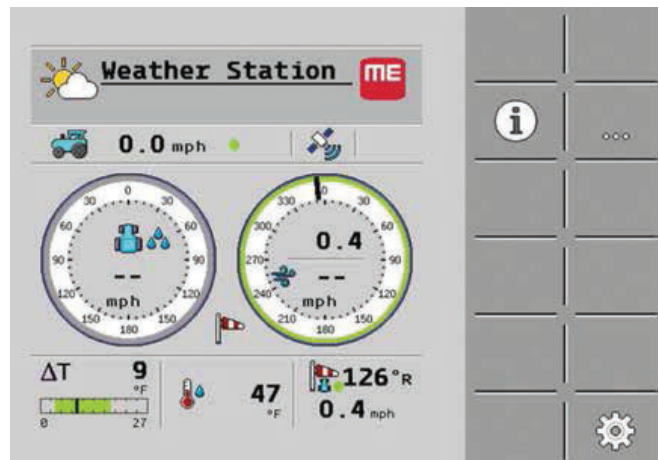
Products Controlled	1
Product Control Type	Manual or Prescription Variable-Rate
Section Control	Yes – 12 Sections
As-Applied Mapping	Yes
Supported Valve Types	PWM and Krohne Flow Meter
Compatible Harnessing	Raven 660 manure harness

### ISOBUS Weather Station

Be prepared for whatever mother nature has planned by monitoring live weather parameters from the comfort of your cab. The Case IH Weather System Kit is the first ISOBUS weather station on the market. It features a simple plug n' play installation process and a maintenance-free design without moving parts for added reliability. Not only does this station give you weather readouts, it will also recommend the fertilizer droplet size given the current weather pattern.

#### Viewable parameters

- True and apparent wind speed and direction
- Temperature
- Relative air humidity
- Barometric pressure
- Machine roll and pitch
- Delta T



## AFS ISOBUS TASK CONTROLLER ALL MAKES

AFS ISOBUS Task Controller can be used for variable-rate and section control on any compliant ISOBUS implement using the AFS Pro 700 display.

### Features

- Automatic section control based on field boundaries or previously worked areas
- Prescription variable-rate application
- As-applied mapping
- Supports TC-BAS, TC-GEO, and TC-SC
- “Section Only” mode simplifies operation for customers that don’t require full functionality
- Variety tracking of seed as well as product tracking for liquid or dry

### COMPATIBILITY

#### Compatible with:

##### Display

- AFS Pro 700

## AFS ACCUCONTROL ALL MAKES

AccuControl can be used in conjunction with a Case IH Nutri-Placer and non-Case IH sprayers, strip-till applicators, NH3 applicators, and 48-row or smaller planters, providing integrated variable-rate and section control using the AFS Pro 700 Display.

### Features

- Controls seed and liquid up to four sections and up to 48 rows for individual row shut-off
- Monitor and record planter population, average spacing, singulation and variation
- As-applied mapping
- Prescription variable-rate application of liquid and NH3
- Single display solution allowing non-Case IH implements to run in parallel with Case IH tractor features and guidance

### COMPATIBILITY

#### Compatible with:

##### Displays

- AFS Pro 700
- AFS Pro 300



## SIDEKICK PRO DIRECT INJECTION SYSTEM



The Sidekick Pro Direct Injection System is designed to provide efficient and accurate application of liquid chemicals applied from an injection module. By using a separate injection module or tank, the system eliminates mixing chemicals in the product/main tank, reduces chemical waste, and simplifies equipment care and maintenance.

### CAN Sidekick Pro

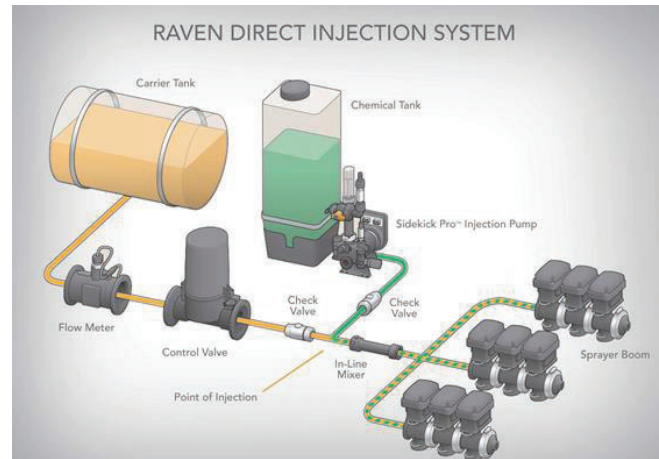
Connect up to two injection systems to 2009-2016 Case IH sprayers to control the system with the AFS Pro 700 or Case IH Viper 4+ displays.

### Sidekick Pro ICD

Connect up to two injection systems through ISOBUS to control the system through the AFS Pro 700, Case IH Viper 4+ or any ISOBUS Universal Terminal (UT) display.

### Advantages

- Little or no tank mixing
- Use of specific chemicals for specific jobs such as treating volunteer corn in soybeans
- Saves time for flushing and rinsing of main tank
- Reduce need for handling of rinsed material from main tank when changing chemicals
- Safe handling of dangerous chemicals
- More accurate application
- Separate product for field records
- Buffer zone application
- Single User Interface via the ISOBUS UT



### COMPATIBILITY

#### Compatible with:

##### Sidekick Pro ICD

- 2017 and newer Case IH Sprayers
  - 22/32/33XX Series
  - 4XX Series
- 2009-2016 Case IH Sprayers with AIM Command FLEX
  - 22/32/33/44XX Series

##### CAN Sidekick Pro

- 2009-2016 Case IH Sprayers
  - 22/32/33/44XX Series



## AIM COMMAND FLEX™

### Superior Spray Technology to Meet Your Productivity Demands

High-efficiency spraying is all about giving every field the best chance of achieving the highest possible yield – while maximizing resources for optimal return on investment. To make the most of your chemical application, every Case IH Patriot sprayer can be equipped with advanced spray technology.

#### AIM Command FLEX enhances Case IH Patriot sprayer productivity

- Controls product flow and pressure more precisely than conventional rate controllers
- Optimizes application rates and droplet sizes for consistent application, regardless of speed and ground conditions
- Delivers more consistent application, even in turns, rough terrain and irregular-shaped fields

#### Here's how AIM Command FLEX works

Pulse Width Modulation (PWM) spray technology ensures a constant application rate and spray pressure, even when sprayer speed changes. Think of it as a way to change nozzle tips without leaving the cab.

- AIM Command FLEX automatically and precisely controls the flow to meet targeted application rates
- Working at 10 pulses per second, nozzle valves vary the duty cycle to maintain the correct application rate as sprayer speed changes

### Achieve Greater Spray Efficiency with Advanced Diagnostics and Precision Tools

#### Nozzle valve diagnostics

With a **nozzle valve diagnostic system**, AIM Command FLEX gives you peace of mind that you'll be able to spot malfunctioning nozzles.

- Monitors each nozzle and alerts operator of potential problems
- LED indicators on each solenoid valve help you spot problems quickly and easily

#### Simple one-screen operation

AIM Command FLEX operates through the sprayer's rate controller – including the AFS Pro 700, Case IH Viper 4+, or other ISO Virtual Terminal (VT) display.

- Monitor and adjust application rate, spray pressure, boom section status, product tank volume and other operating parameters – all from one display

#### Accurate spray mapping

- Generate as-applied maps and application reports
- AIM Command FLEX recognizes internal and external boundaries, along with no-spray zones



## AIM COMMAND FLEX™

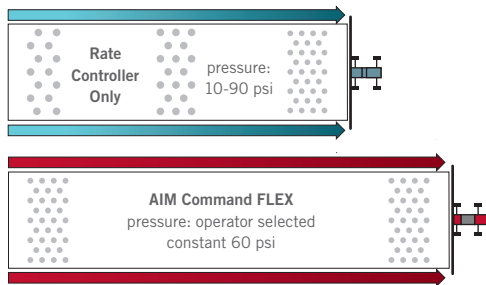
### Better Application Quality Across Every Field

#### Precise product flow

AIM Command FLEX precisely controls product flow and spray pressure.

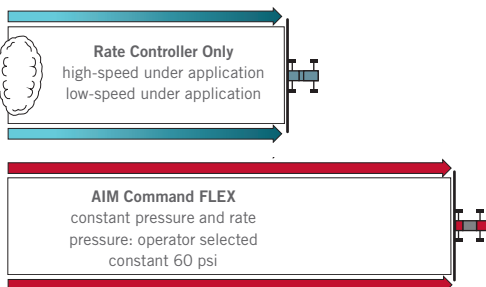
- Accommodate sprayer wheel tracks, fence rows or other field conditions with pre-set spray rates up to 30% higher than your target rate on up to eight nozzles
- 36 separate “virtual” boom sections deliver the ultimate in spray accuracy and precision

#### Consistent coverage everywhere:



#### Out of the corner control:

high – pressure drift puffs



#### Improved drift control

For on-demand drift control, AIM Command FLEX allows you to **toggle between two pre-set spray pressures** that can be reset up or down at any time.

- Pre-set a target spray pressure to achieve the desired droplet size for the product you are applying
- Input a lower pressure setting to selectively avoid off-target application

#### Instant on/off

- Reach target rate and spray pressure immediately after nozzles are turned on
- No pressure bleed-down or nozzle dribble at turn-off

#### Efficient, effective applications

Eliminate worry about over- or under-application.

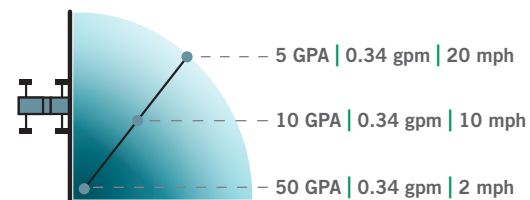
- Maintains consistent application rate and spray pressure across the field and over a wide range of speeds
- Constant pressure allows you to choose the speed that best fits your conditions and still get the best possible product coverage

#### Turn compensation

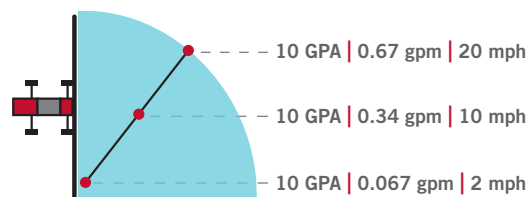
Ground speed varies across the boom during turns, causing inconsistencies in application. AIM Command FLEX compensates for different speeds to ensure the correct application rate all the way across the boom.

- Each nozzle adjusts to match the targeted application rate based on speed, nozzle position on the boom and the turn radius

#### Conventional rate controller



#### AIM Command FLEX



## COMPATIBILITY

### Compatible with:

- 2009 and newer Case IH Sprayers

## FIELD-IQ™ CROP INPUT CONTROL SYSTEM



The Field-IQ Crop Input Control System enables productive and efficient functionality for your planting, nutrient, and pest management operations.

### Features

#### Variable-rate application control

Save on input costs by monitoring and simultaneously varying up to six different materials.

- Simultaneously control the application rate of different materials including seed, granular fertilizer, liquid, and anhydrous ammonia manually or using a prescription
- Keep as-applied mapping records of inputs

#### Automatic section control

Increase your profits by avoiding double coverage and eliminating wasted inputs using automatic or manual section control.

- Automatically control up to 48 rows individually for maximum savings in seed and other inputs
- Use Vehicle Sync to automate real-time map sharing of coverage maps

#### Seed monitoring

Monitor real-time seeding information or fertilizer delivery lines and prevent costly planter problems by catching them early before they cause yield reduction.

- See the results of singulation analysis, including information on population, singulation, skips/multiples, spacing, and quality of spacing

#### Tru Count products

Tru Count Air Clutches and LiquiBlock valves allow you to start and stop the flow of seed and fertilizer in real-time from the vehicle cab.

#### Spinner speed control

Automatically control spinner speed for spreader application systems.



### Advantages

- Decreases input costs
- Eliminates over-application
- Provides even application of product
- Creates uniform yield across fields
- Reduces operator fatigue

### COMPATIBILITY

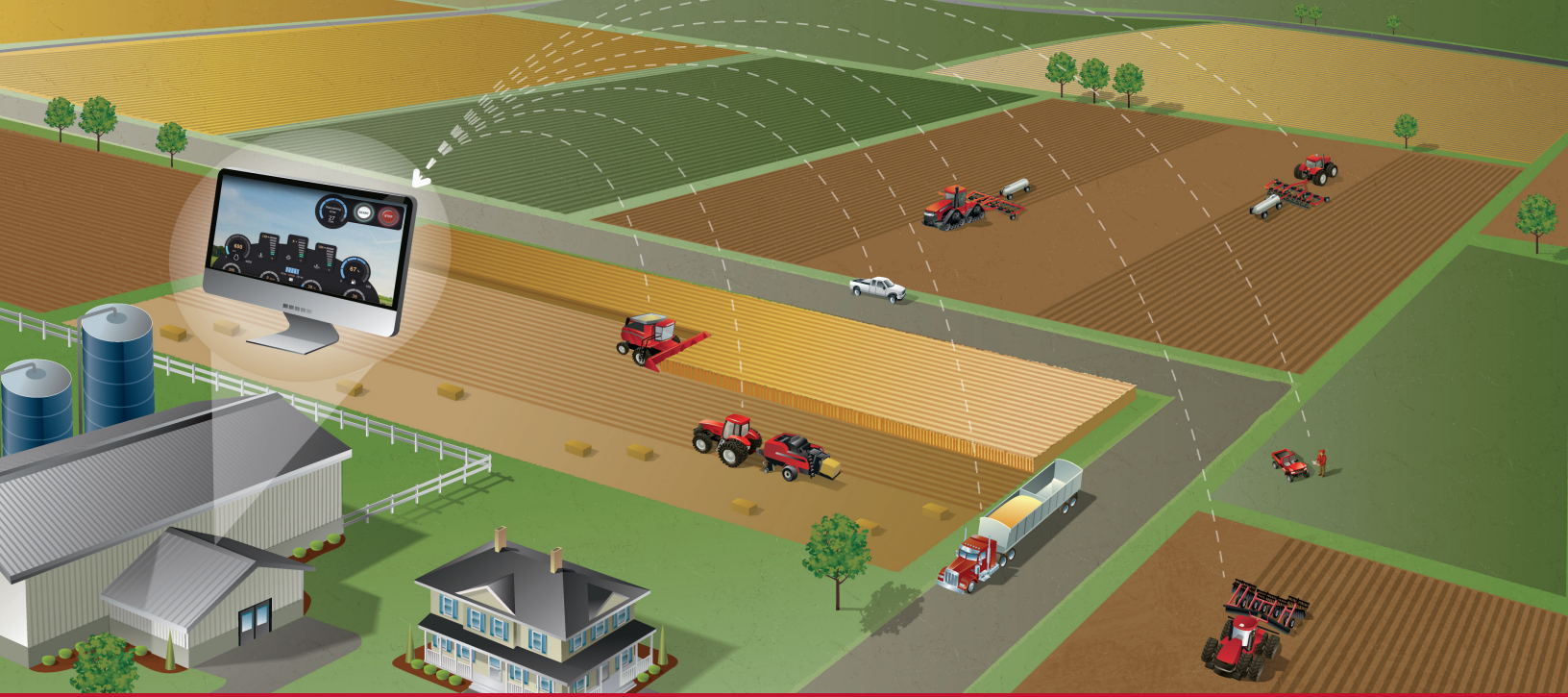
DISPLAY FUNCTIONALITY	XCN-2050 W/ FM1000+ APP	XCN-2050	XCN-1050*	FM-750
<b>FIELD IQ AUTOMATIC SECTION CONTROL</b>				
Number of Sections	Up to 48	Up to 24	Up to 24	Up to 48
Tru Count Clutches	•	•		•
Boom Valve	•	•		•
<b>FIELD IQ CONTROL DRIVES</b>				
Number of Control Drives	Up to 6	1	1	Up to 2
Rawson	•			•
Servo	•	•	•	•
PWM	•	•	•	•
Linear Actuator	•			
Electric Over Hydraulic	•			
Spinner Speed Control	•			
<b>FIELD IQ MATERIALS</b>				
Number of Materials	Up to 6	1	1	Up to 2
Seed	•			•
Granular Fertilizer	•			•
Liquid	•	•	•	•
Anhydrous	•			•
<b>FIELD IQ SEED MONITORING</b>				
Basic Population	•			•
Singulation Analysis	•			•
<b>ISOBUS UNIVERSAL TERMINAL AND TASK CONTROLLER</b>				
Universal Terminal	•	•	•	
Number of ECU's	1	Up to 6	Up to 2	
Number of Channels	1	Up to 6	Up to 2	
Number of Sections	Up to 48	Up to 255	Up to 255	
<b>MULTI APPLICATON CONTROL</b>				
Max. Number of Channels		Up to 6	Up to 2	
<b>SUPPORTED APPLICATON TYPES</b>				
ISO Task Controller		•	•	
Field IQ		•	•	
T.U.V.R.		•	•	
<b>VARIABLE-RATE APPLICATION</b>				
GreenSeeker System	•			
Shapefile Prescription Map	•	•	•	•

\* Basic Field-IQ only.

### Field Overlap W/O Section Control

	PLANTER.NH3 @ 5 MPH			SPRAYER @ 15 MPH		
	45 FT.	60 FT.	90 FT.	60 FT.	90 FT.	120 FT.
Rectangle with straight rows	0.7%	0.7%	0.7%	2.1%	2.1%	2.1%
Rectangle with angled rows	2.5%	3%	4.2%	4.5%	5.6%	6.8%
Parallelogram/Trapezium	1.6%	1.9%	2.5%	3.3%	3.9%	4.5%
Angled with waterway	4.2%	5.4%	7.7%	6.8%	9.1%	11.5%
Pivot	3.9%	4.9%	7%	6.3%	8.4%	10.5%
Odd shaped/Contours	8.8%	11.5%	16.9%	13%	18%	24%

\* Based on KSU work by Terry Kastens: "KSU-GPSguidance.xls" using 100 ac fields.



# DATA MANAGEMENT

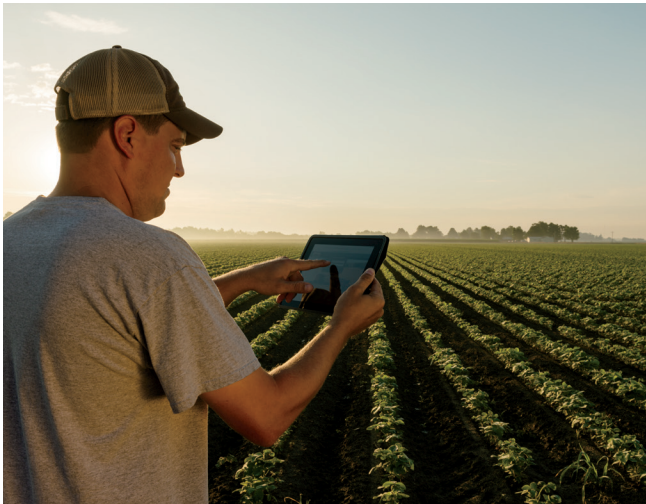
## AFS SOFTWARE



A single software suite enables you to maximize the value of your AFS technology. AFS Software enables you to view, edit, manage, analyze and utilize your precision farming data. Designed to fit your operation's needs, AFS Software offers the flexibility and analysis power to support all your precision farming needs. Generate yield maps, prescription maps and more from a single, integrated software package. Organize and generate layouts, reports, charts and maps all with a single software program. Plus, create soil sampling maps, create and print reports and import satellite imagery.

### Technology in the Field

Use AFS data – historical and in season – to plan for higher yields this year and in the years to come. Rather than work an entire field, target the appropriate tillage to areas showing likely signs of compaction, or use variable-rate technology to apply the right nutrients at the proper rate, precisely when your growing crop needs them.



### Multiple File Formats

Case IH AFS software makes it easy to import and export data in a variety of file formats, allowing you to pull in data from multiple sources.

- ESRI Shape
- ASCII text
- BMP, JPEG, GeoTIFF or TIF image files

## AFS VIEW



View and track your data with a customized list of farms and fields, which can then be shared with precision farming devices for data management. No unlock, and no expiration.

## AFS MAPPING AND RECORDS ALL MAKES

AFS Mapping provides basic and advanced layering functionality while maintaining a complete field record-keeping system. With the flexibility to handle multiple types of hardware solutions, this package allows you to make management decisions from yield data, soil types, soil test results, hybrids, and more.

- Read and write data for use with a wide range of precision farming devices
- Layer variety maps with yield maps to establish yield performance
- Create, edit and manage guidance paths from popular guidance systems including all Case IH guidance displays
- Print reports for seed varieties, restricted use chemicals, fertilizer usage, equipment maintenance and more



### Data Management

Overlay yield and soil maps to determine the best use of inputs for the field. Then, generate a prescription that can be sent directly to the machine using Data Sharing:

- **Soil Map.** Analyze a field's soil makeup to help determine which fertilizer to use and how much
- **Yield Map.** Analyze previous years' yield maps to help determine input amounts in any given location in the field for maximized yield potential
- **Prescription Map.** Generate a prescription map using yield and soil data to maximize an entire field's growing potential while minimizing input costs; transfer the prescription directly to the machine using Data Sharing with AFS Connect
- **As-Applied Map.** Record exactly what is being applied during application
- **Vehicle Performance Map.** Map fuel economy using the Trip Computer software in the AFS Pro 700 display to analyze differences in operations and operators
- **Boundary Map.** Create interior and exterior boundaries of fields, such as waterways, terraces, etc.

## AFS BOOKS ALL MAKES

Create summary reports by farm, field, crop or supply to track all farm expenses and revenue:

- Access the profitability of fields, livestock groups and equipment
- Print tax reports for both cash and accrual general ledgers
- Keep up-to-date inventory for supplies (seed, chemicals, fertilizer, feed, etc.), harvested crops and livestock

## AFS WATER CONTROL ALL MAKES

AFS Water Control provides subsurface water management solutions:

- View topographical data in 3D from any angle
- Utilize drawing tools to tie laterals to mains, create parallel lateral spacing and clip drainage lines
- Layout and design drainage tiles by size, pipe type and phase
- Enter minimum depth, maximum depth and optimum grade

## AFS CONNECT™ ALL MAKES

The new AFS Connect telematics portal is your connection to your farms, your fleet, and your data – everything you need to make the most informed management decisions for your operation. The completely new intuitive interface makes it easy to:

- ✓ Manage data to and from your machines, software, and advisors
- ✓ Track connected machines and fleet
- ✓ Visualize data as if you were in the cab



### Work smarter by tracking your equipment in real time with Case IH AFS Connect Portal.

#### Performance monitoring and machine logistics

Monitor equipment and logistics to achieve peak performance.

- Machine status
- Engine hours
- Idle time
- Tank levels

#### Coordinate your Case IH machines

Easily viewing machine location and operational status places the power in the hands of the farm manager to make quick, informed managerial decisions.

#### Alerts

Visualize Faults as well as the status, count, and description.

#### Notifications

Set key parameters to receive text alerts.

- Vehicle speeds
- Water temperature
- Oil pressure
- Engine load
- Fuel level
- Dealers

### Get more done each day by easily organizing your fields, applications and agronomic data.

#### Gather and visualize data for better insights into your operation

**Operation data**

- Harvesting
- Planting
- Spraying
- Spreading
- Swathing
- Tillage

---

Boundaries, Landmarks & Swaths

**FIELD DATA**  
Created on 2018

OPERATION DATA  Planting Harvesting

All operations

SETUP DATA Boundaries, Landmarks, Swaths

PERMISSION View Only

FIELDS 4 Fields

- Identify fields, then view activity
  - Tillage
  - Planting/Seeding
  - Application
  - Harvesting
- Aggregate data from multiple vehicles in one field
  - Collect and compile harvest or as-applied data into one field file
- Layer and visualize agronomic and actionable data in AFS Connect Portal

#### Remotely monitor, coordinate and optimize fleet performance

Allows farm manager to take immediate action by communicating with the machine operator if an issue is identified.

#### Push guidance lines and prescriptions to equipment remotely

- Provide only the necessary field information to the operator
- Allows priorities of field activities to change if immediate action is needed on specific fields

**Field data**  
Includes logged operation data, boundaries, landmarks, swaths & GFF

- All Fields & Fields Data**  
Includes all current and future fields and field data
- Select Specific Fields & Fields Data**  
You will select fields and types of operation data to include for all selected fields

## AFS CONNECT™ ALL MAKES

Connect and securely share your farm data with trusted partners, anywhere, anytime.

### Manage data maps

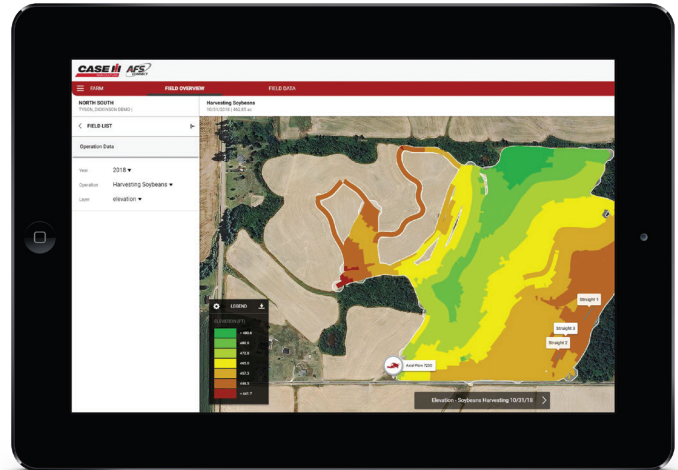
- Yield maps
- Guidance line patterns
- As-applied maps
- Seeding and fertilizer prescriptions and more

### Wirelessly transfer data

- From AFS Connect to your trusted advisors or preferred farm management software
- Make the most of data captured by your machinery
- Drive management decisions based off data analysis

### Control data access

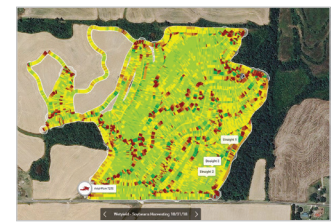
- Complete control on who can access data generated by your equipment
- Control each piece of data, such as which field data, operational data is sent to partners or farm management software



Soybean elevation



Soybean moisture



Soybean yield

View your entire fleet operation.

VEHICLES	FAULT NAME	STATUS	SEVERITY	FAULT ID	SOURCE	DATE
1 Fleet 12 Vehicles	Axial-Flow 9250   Axial-Flow 9250	Inactive	Medium	A-0098	DISPLAY	2:29 PM
CHI NAFTA ProDemo2	Header Height Sens. LC - Shorted to low source Axial-Flow 9250   Axial-Flow 9250	Active	Low	E-0058-04	FAULT	2:23 PM
Axial-Flow 7240 Case IH Axial-Flow 7240   YJG238013	Rear Ladder Down Axial-Flow 9250   Axial-Flow 9250	Inactive	Medium	A-0021	DISPLAY	2:11 PM
Axial-Flow 7250 Case IH Axial-Flow 7250   YJG238012	11/19/2018 2:11 PM Rear Ladder Down			Axial-Flow 9250 Case IH Company: CNH NAFTA PRODEM02 PIN Number: YJG238020		
Axial-Flow 7250 Case IH Axial-Flow 7250   YJG238016	Occurrences 7 <a href="#">VIEW HISTORY</a> Engine hours 95.73 h					
Axial-Flow 8250 Case IH Axial-Flow 8250   YJG238018	Unload Engaged Axial-Flow 9250   Axial-Flow 9250	Inactive	Low	A-0022	DISPLAY	11/17/2018
Axial-Flow 8250 Case IH Axial-Flow 8250   YJG238015	Graintank 3/4 full Axial-Flow 9250   Axial-Flow 9250	Inactive	Low	A-0102	DISPLAY	11/17/2018
Axial-Flow 8250 Case IH Axial-Flow 8250   YJG238019	Auto HHC Switched Off Axial-Flow 9250   Axial-Flow 9250	Inactive	Low	A-0082	DISPLAY	11/17/2018
Axial-Flow 9250 Case IH Axial-Flow 9250   YJG238020	Cannot Engage Automatic Axial-Flow 9250   Axial-Flow 9250	Inactive	Medium	AG-170	DISPLAY	11/17/2018
Axial-Flow 9250 Case IH Axial-Flow 9250   YJG238017	Tailings Volume HIGH Axial-Flow 9250   Axial-Flow 9250	Inactive	Low	A-0131	DISPLAY	11/17/2018
JEEZ0540JF314457 Case IH STEIGER 540 QT   JEEZ0540JF...						
JEEZ0540JF315182 Case IH STEIGER 540 QT   JEEZ0540JF...						

## CASE IH UAV

The Case IH UAV solution provides a whole new perspective, instantly. Local processing on the drone and mobile device deliver instant, in-field processing of drone imagery. Quickly take the pulse of crop health and immediately begin uncovering opportunities – such as adjusting your fertilizer program or identifying insect pressure or weed escapes – even before the drone touches down.

### Features

- Industry-leading analysis tools and app marketplace
- Export data to AFS Mapping
- Saves imagery as Shapefile or GeoTIFF
- Capable of data sharing

### Advantages

- Pinpoints potential problem areas in your field with GPS location
- Flight operations, imagery upload, and analysis is completed in a single tool
- No manual flying is required
- Imagery is uploaded in minutes

### Real World Applications

**Crop scout to detect plant health problems:** Drone mapping helps pinpoint the location and extent of plant health issues.

**Plant counts and stand establishment:** Compile automated plant count reports of entire fields to aid in re-plant decision making.

**Generate variable-rate prescriptions:** Export drone-generated shapefiles to assist with creating variable-rate prescriptions for nitrogen, pesticides, and other targeted nutrient applications.

**Negotiate fair crop loss percentages:** Annotated crop health maps help users with insurance requests and recouping crop losses.

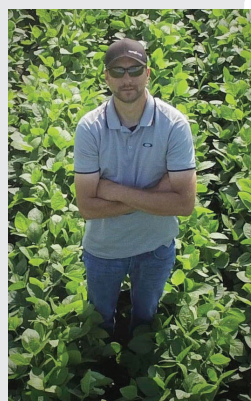
**Assess and clean up after natural disasters:** Estimate the extent of storm damage and spot hidden debris.

**Water management assessment:** Drone maps can assist in planning for drainage tile placement and help assess a water management system's effectiveness.



### The Case IH UAV Package with Fieldscanner Includes:

- DJI® Mavic 2 Pro Drone with 1" CMOS camera and remote controller
- Hard-sided carrying case
- Accessories including 2 batteries, standard battery charger (simultaneously charges 1 battery and remote controller), cables, mounts, and Micro SD Card
- One-year subscription to DroneDeploy® Premium or standard software



“After I got the first map, decided I was going to fly it every week just to see the sheer contrast between the rows. When we do take this to harvest, we'll have a weekly log of what the crop was doing throughout the growing season.”

– Rob Eggert, MN





## CASE IH UAV

### Software That is Field Tested and Farmer Approved

Case IH has collaborated with DroneDeploy® to provide you with UAV Software that is innovative, industry leading, and easy to use. To ensure that your drone is never grounded, we offer support by email, phone, and live chat, giving you the choice of the support style that is most convenient for you.

#### A customer should choose premium, instead of standard if they plan to:

- Generate standard maps of over 200 acres per field at high altitudes
- Generate stand establishment, plant count, crop damage, or other specialized reports of over 100 acres per field

#### The Case IH UAV Software Solution Powered by DroneDeploy now includes:

**Real-Time Live Map:** The Case IH Software data solution powered by DroneDeploy is the first to market with a Real-Time Live Map. Capture, process, and analyze images right from the field without internet access. Spot problem areas and ground truth without having to go back to the office!

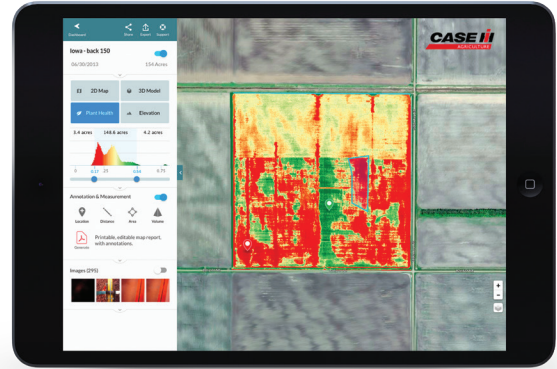
**Crop Reports:** Up to 1000 acres of Agremo stand count and plant population analysis

**Ground Control Points:** Essential for creating survey grade maps for the purpose of terrain leveling (Premium offering only)

#### Agremo App on DroneDeploy

The Agremo app analyzes the actual amount of plants in a field compared to the number of plants intended for that particular field. This information can be used to:

- Evaluate plant emergence and germination. Spot areas with potential crop loss in time and decide whether or not to replant
- Evaluate seed quality
- Analyze the number of plants at the beginning and at the end of the growing season
- Evaluate how effective replanting measures were
- Know exactly how many plants you will be able to harvest (and sell)
- Plan harvest and yield-related processes (logistics, resources)



Data Solution Powered by:  **DroneDeploy**

### Image Mapping Software Features

ANALYSIS TOOLS AND REPORTING	PREMIUM	STANDARD
Included Stand Counting	1000 Acres	1000 Acres
Real-Time Live Map: Offline ortho and Health Processing Crop	Yes	Yes
View NDVI, 3D Models, Elevation Models	Yes	Yes
Measure area, distance, elevation, volume	Yes	Yes
In App collaboration and sharing	Yes	Yes
Digital Terrain Models	Yes <sup>1</sup>	No
Ground Control Points	Yes <sup>1</sup>	No
Access to App Market for Advanced Analytics	Yes	Yes
Export File Types	JPG, Shapefile, GeoTIFF, OBJ, LAS, XYZ, DXF, Contour	JPG, Shapefile, GeoTIFF, OBJ
STORAGE AND PROCESSING	PREMIUM	STANDARD
Max # of Maps	Unlimited	Unlimited
Maximum Storage	Unlimited	Unlimited
Resolution	1 cm/pixel	1 cm/pixel
Max Photo Upload Per Map	3000	1000
Cloud Processing	Yes	Yes
Processing Priority	High	Low
USERS AND SUPPORT	PREMIUM	STANDARD
Additional Users	Yes <sup>2</sup>	No
Roles and Permissions	Yes	No
Subscription Length	1 Year	1 Year
Support	Email/Chat	Email/Chat

1. Additional fee charged per map.

2. Additional fee charged per user per year. Maximum of 3 additional users.



# WATER MANAGEMENT

## FIELDLEVEL™ II

The FieldLevel II system streamlines the surveying, designing, and leveling steps required for land-leveling projects and provides two methods for installing rice levees.

### Land Leveling

FieldLevel II is a complete solution for surveying, designing, and leveling field surfaces to ensure optimal water management.

### Features

#### Survey

- Map fields to provide optimal field coverage
- Easily create boundaries, interior points, and surfaces
- Calculate and report on the true acreage of the survey area

#### Design

- Design the best surface using Autoplane technology
- Define primary and cross slopes
- Utilize WM-Form land forming software for more complex field requirements

#### Level

- Drive scraper hydraulic valves automatically
- Operate both tandem and dual scraper systems

### Advantages

- Efficiently distribute water by maintaining grade
- Improve yields by controlling excess water
- Minimize water costs and improve farm productivity

### Use the FieldLevel II System for:

- Topographic surveying
- Land leveling
- Levee design and installation

### Levee Design and Installation

FieldLevel II offers two methods of installing rice levees including a complete levee design and grade solution or the option of guiding the vehicle manually along a contour.

## COMPATIBILITY

### Compatible with:

#### Display

- XCN-2050™

## WM-DRAIN® FARM DRAINAGE SOLUTION ALL MAKES

The WM-Drain farm drainage solution is a concept-to-completion toolset that streamlines the survey, analysis, design, installation, and mapping steps of surface and subsurface drainage. The WM-Drain solution ensures optimal 3D drain placement, which improves crop yields by controlling ponding, optimizing root depth, maximizing planting seasons, and minimizing nutrient loss.

### Features

- Seamless, integrated solution for survey, analysis, design, installation, and mapping steps of surface and subsurface drainage projects
- Software for analysis and optimal 3D drainage design
- On-the-go design capabilities
- T3™ Enhanced Terrain Compensation Technology for roll-corrected 3D positioning

### Use the WM-Drain System for:

#### Survey

Collect 3D field data with ease using either the WM-Topo™ survey system or XCN-2050™ display.

#### Analyze

Analyze the 3D field data using AFS Water Control software to make better-informed drainage decisions and plans.

#### Design

Design and verify a complete 3D drainage system using AFS Water Control software, or design drainage lines on-the-go without having to leave your vehicles.

#### Install

Take your drainage designs back to the field and utilize the WM-Drain module on the XCN-2050 display along with 3D machine control technology for precise installation of your pipe or surface ditches.

#### Map

Map the true location of your installed drainage pipes or ditches and utilize the records for future maintenance or drainage expansion projects.

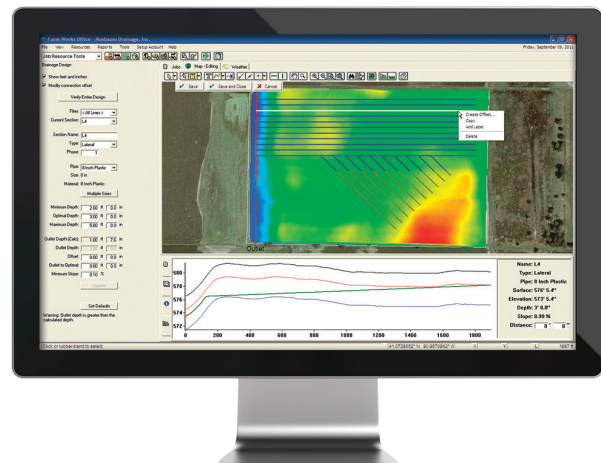


### Advantages

- Complete all your drainage operations with one integrated solution that can be used with any type of drainage plow
- Improve crop yields up to 30% by removing excess water reducing plant stress and allowing for a more developed root zone
- Reduce field compaction and minimize soil erosion
- Increase operating efficiency up to 20% compared to laser equipment

### AFS Water Control

AFS Water Control is a component of AFS Software that provides surface and subsurface water management solutions.



### COMPATIBILITY

Compatible with:

#### Display

- XCN-2050™



# PRECISION PLANTING

## MAXIMIZE YIELD POTENTIAL WITH CASE IH PREMIER DEALERS AND PRECISION PLANTING



Case IH Premier Dealers have been trained on select Precision Planting product families and understand how to support those products to help improve your equipment and stands. They offer and support Precision Planting products that will help maximize your productivity in the field including solutions for mixed fleets that may contain Deere and Kinze planters. Retrofit older planters to improve their performance with Precision Planting products that have staying power for the seasons ahead. Case IH Premier Dealers are your trusted planter experts and the one-stop shop for the needs of your machine and your Precision Planting upgrades.

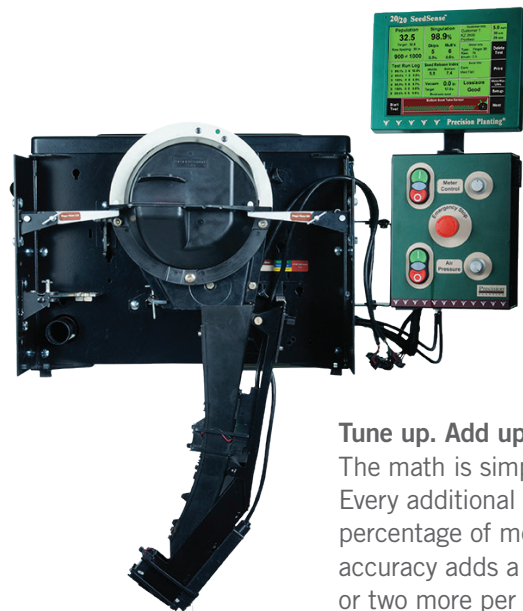
## METERMAX ULTRA TEST STANDS



### Calibration Simplified

While they should run at 98% or better, many meters only deliver 92%–97% accuracy. That’s why every meter should be calibrated every year. Drawing on the unmatched precision of 20/20 SeedSense®, MeterMax® Ultra calibrates your meters to your seeds, speed, spacing and population. So take your seeds and meters to your Case IH Premier Dealer, then watch for the added ears, yield and profit. 98%+ accuracy: a seemingly small difference over typical meters, but with a big impact on yield. Case IH Premier Dealers are here to bring your accuracy to where it should be, offering a variety of testing applications, including:

- Population
- Test run log
- Vacuum
- Singulation
- Seed information
- Seed release index
- Loss/acre



**Tune up. Add up.**  
The math is simple. Every additional percentage of meter accuracy adds a bushel or two more per acre.

**Call a Case IH Premier Dealer today to have your meters calibrated.**

*To locate a Case IH Premier Dealership near you, go to the dealer locators featured on the Case IH or Precision Planting home pages. The Case IH dealer locator allows you to filter for Case IH Precision Planting Premier Dealers via the advanced search.*

## 20|20® DISPLAY

### High Definition Agronomic Technology

High definition data enables high impact decisions. The new 20|20® monitor provides the most advanced agronomic picture you've ever seen. Optimize planting, harvest, and application decisions with a smart, intuitive interface that visualizes performance and field conditions in real time; seed by seed, plant by plant, drop by drop. Customize display configurations, add sensors, and discover things about your field you may have never known.



The 20|20 powers the most agronomically advanced systems on the market that control population, down force, liquid, multi-hybrid planting and higher speed planting, all while sensing the furrow. The 20|20 does all this and more to provide you the accurate data to make critical decisions and optimize every pass through the field.

- View the most important metrics in real-time
- Control population, down force, liquid, multi-hybrid planting, and more
- Customize to monitor and control based on your individual needs

### Your Data, Customized

Take control of your operation by understanding what's happening during every pass through the field. Instantly manage the data you collect, and choose from a limitless number of customizable views. Put metrics, maps and relevant data on a single display.



### See the Difference

You can find all of these metrics and more on the 20|20.

METRIC	DESCRIPTION
Furrow Moisture*	Water weight a seed will gain in three days
Furrow Temperature*	Real time temperature of the soil in the furrow
Uniform Furrow*	Variation in the furrow - light, cloddiness, moisture changes
Clean Furrow*	Absence of crop residue
Organic Matter*	Estimated soil organic matter
Ground Contact	Row unit planting/seeding at the depth it is set
Margin	Excess weight on gauge wheels
Ride Quality	Smoothness of row unit
Singulation	Amount of properly singulated seeds
Liquid Rate	Rate of liquid applied
Yield	Spatially accurate crop yield
Applied Down Force	Force applied to the row unit

\* Available on planters equipped with SmartFirmer

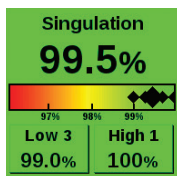


## 20/20 SEEDSENSE ALL MAKES

### Knowledge and Control

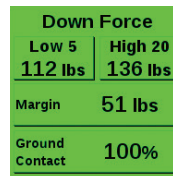
Know what your planter is doing and take control of its operation. Base future purchase decisions on facts, not guesses or estimates. With its color-coded, touchscreen display, you'll spot any errors in down force, spacing and singulation immediately. You'll zero in on the source. You'll check it out. You'll fix it. And you'll move on, confident that you're doing everything you can to plant profitably.

- Maximize speed without compromising accuracy or ride
- See the percentage of skips and multiples for every individual row
- Watch ground contact to plant at full depth
- Monitor excess weight that leads to compaction



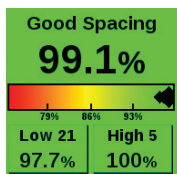
#### Singulation

See the percentage of skips and multiples for the entire planter and each individual row. 95% singulation isn't good enough.



#### Down force

Watch ground contact to be sure you're planting at full depth and monitor excess weight that leads to compaction – which leads to lost potential.



#### Good spacing

This is the percentage of seed spaced within the limits you set. Picket row fence, here you come.



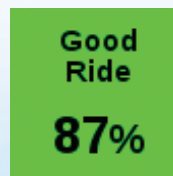
#### Hex shaft

Is your ground drive transmission slipping? One glance tells you.



#### Loss/acre

See relative yield loss from the combined errors. If it says "Good", you're good.



#### Good ride

Row Unit Ride reports bounce and vibration of the row unit, letting you know if you need to slow down.



## vSET



### Higher Accuracy and Higher Yield

95% singulation results sound good until you've seen 99%. You can do better with vSet and get proven results that picket fence your field. Get superior singulation that will send you back to the barn with a smile.

vSet releases seeds down the center of the tube which is critical to optimum spacing. And vSet makes sure no two seeds of any kind can occupy the same hole. One seed locks in and one seed drops. Every time. It handles any seed size or shape without finicky tweaks to vac pressure, disk or singulator settings.

Just pour in the seed and go. Then get ready for your best possible yield.

- The best singulation available
- Outstanding reliability
- Easy to maintain and use



## vSET SELECT

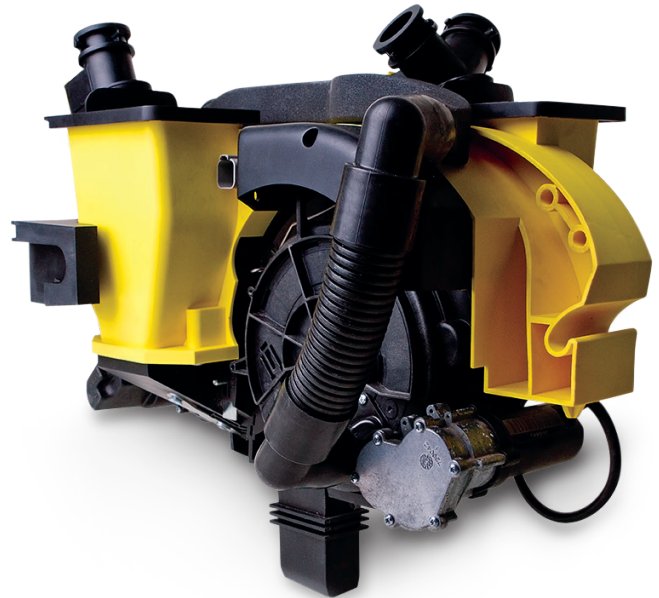


### Multi-Hybrid is Here

You aim to maximize yield by planting the hybrid that will do the best, on average, across the whole field. But yield environments often change in the same field, calling for different hybrids in different areas. You've had to make compromises, but not anymore.

With vSet Select you can plant two hybrids in the same row, switching back and forth as environments change, to plant the hybrid that will produce the most in each environment. That maximizes yield.

- Uses standard dual bulk seed tanks
- The best meter technology
- Row by row control, instant hybrid switching



**vDRIVE**



## Control and Accuracy

vDrive is a custom planter on each row that ensures your population is right on target. Whatever you need and ask of that row happens. Period. Season one, you have the capabilities to do your best planting, plus a meter and drive setup that has staying power for the seasons ahead.

- Males and females
- Independent rows
- Prescription accuracy
- Built for speed
- Manage curves

## Remove Headaches

Mechanical drive systems have a lot of moving parts and require maintenance and costly upkeep. vDrive is self-contained and virtually maintenance free. Ensure your planting success with a stable setup you can count on season after season.

## vSet Unleashed

vSet meters are an engineering marvel. Combine them with vDrive and get amazingly precise population control through curves and ground speed changes. vDrive works with all variable-rate prescriptions – even highly granular ones.

## vDrive Insecticide – Powered by vDrive Electric Motor

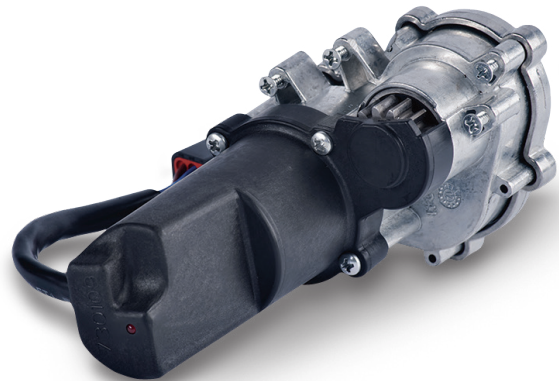
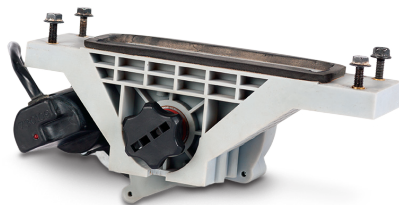
### Chain-free insecticide: complete the chainless planter

Normal insecticide meters are chain driven and accurate at a single speed. In the past, if you wanted to use an electric drive for your seed meter and apply granular insecticide, you would have had to leave the chains. Not anymore.

vDrive Insecticide is the electric motor-driven insecticide meter that provides accurate delivery across your entire speed range. Row by row control for your insecticide delivery is now within reach.

### vDrive Electric Motor

Provides accurate delivery across entire speed range.



**vDrive**

**Standard**

### Population control, even around curves

5.9% of the average farmer's field is double planted. vDrive takes the place of both a drive system and clutch. It plants the population you set, and no more. With these motors, you can control each row of your existing planter individually: precisely executing variable-rate prescriptions, planting correct populations around curves, and utilizing automatic row-by-row shut-off on point rows, avoiding double plant.



## vApplyHD®

### Flow Measurement and Control On-Row

vApplyHD is the industry first, on-row liquid control product which incorporates flow measurement and control into a single device. Its row-by-row features include turn compensation, swath, automatic flow balancing, and variable rate prescription execution. The module is easy to install, simple to use, and designed with industry leading flexibility. The vApplyHD module is used, without modification, from the lowest pop-up rates on the planter to the highest sidedress rates, across the full range of speeds.

- Easy to install and simple to use
- Improves application distribution
- Reduced hardware complexity

### Apply Precisely on Every Row

A Precision Planting customer from Wilmington, Ohio was planting and applying starter at a flat rate across a field with a significant variation in elevations and soil types. He decided to convert to vSet® Select and vApplyHD to better utilize his seed and starter in order to optimize his yield. Comparing two years of yield data which had very similar weather, he was able to show a 16 bu/a increase by varying starter applied on the planter along with hybrid and population, meanwhile reducing his total amount of starter by 30%.

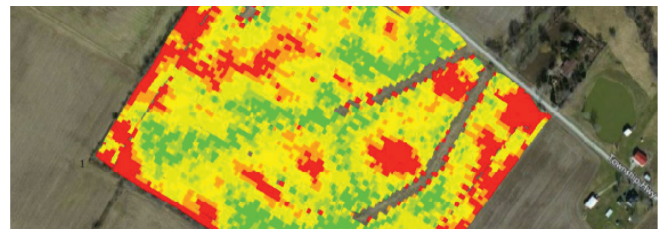
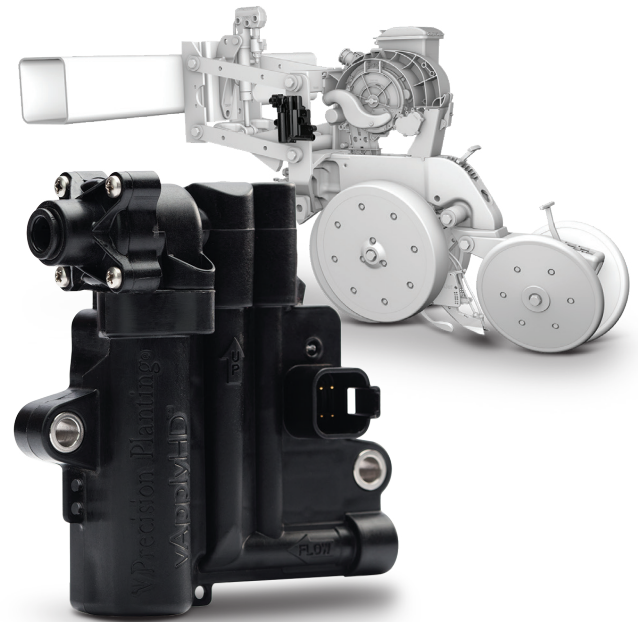
### Specifications

#### Compatibility

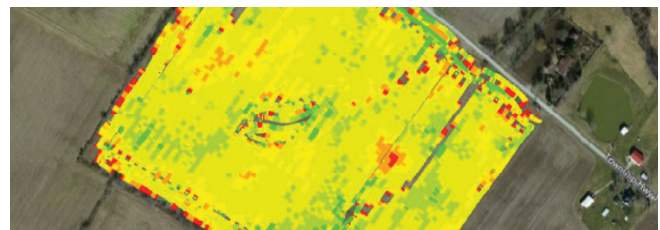
- SRM systems
- Side-Dress applicator
- Up to (2) vApplyHD modules per row and/or (2) FlowSense™ modules
- Section control vApplyHD (needs FlowSense on all rows)
- Not compatible with suspension fertilizers
- vApplyHD Module Compatible pump types controlled by: (electrical, hydraulic, ground drive)
  - Diaphragm                      – Piston
  - Centrifugal                    – Electrical
- vApplyHD is not compatible with Squeeze Pump

#### Flow ranges

- Max sealing pressure 100 PSI
- .05-3.0 GPM (approx 3 GPA to 60 GPA assuming 30" rows)
- Eliminate needs for orifices
- High resolution data mapping



2012 yield map 162 bu/a field planted with flat rate seed and flat rate pop-up



2016 yield map 178 bu/a field planted with variable rate seed and variable rate pop-up

#### Plumbing requirements

- 80 mesh strainer between tank and vApplyHD modules
- Manual pressure relief valve
- System accumulator
- Pump outlet pressure sensor

## DELTA FORCE

### Down and Lift Control

Two directions of control plus a simple user interface for down force like no one else — DeltaForce replaces the springs or air bags on your planter with hydraulic cylinders. It automatically increases or reduces weight with military precision, on each row individually. So when one row encounters conditions different than another (wheel tracks, old road beds, clay knobs, headlands, etc.), each will adjust independently.

Row by row, foot by foot, even seed by seed, you produce an environment that fosters uniform germination, optimum growth and maximum yield. You can put DeltaForce on most Case IH, Deere, and Kinze planter models.

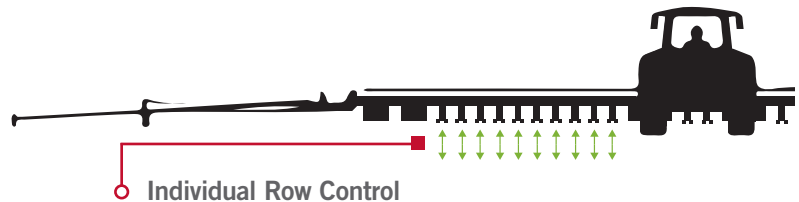
- Independent row response
- Hydraulic controlled down and lift
- Sub-second response to changing conditions



DeltaForce row unit down pressure control

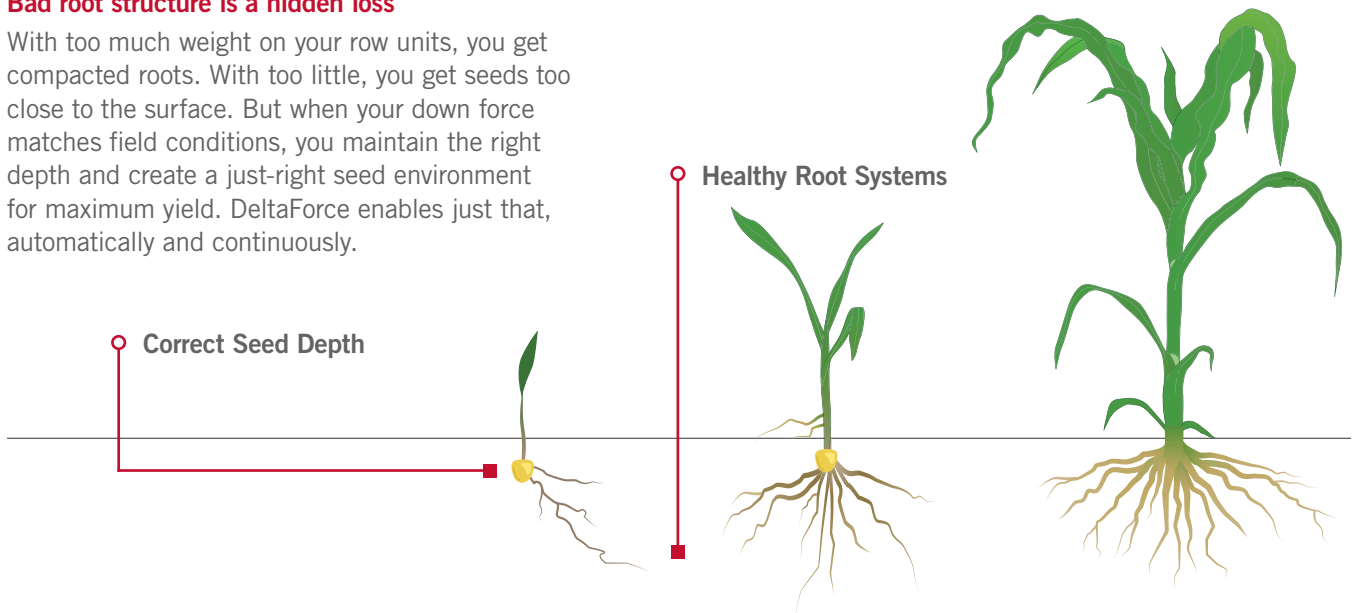
### Why focus on down force control?\*

Get an average 11+ bushel per acre advantage with DeltaForce. Each row has unique depth control, from flat fields to varied terrain, and across soil types.



### Bad root structure is a hidden loss

With too much weight on your row units, you get compacted roots. With too little, you get seeds too close to the surface. But when your down force matches field conditions, you maintain the right depth and create a just-right seed environment for maximum yield. DeltaForce enables just that, automatically and continuously.



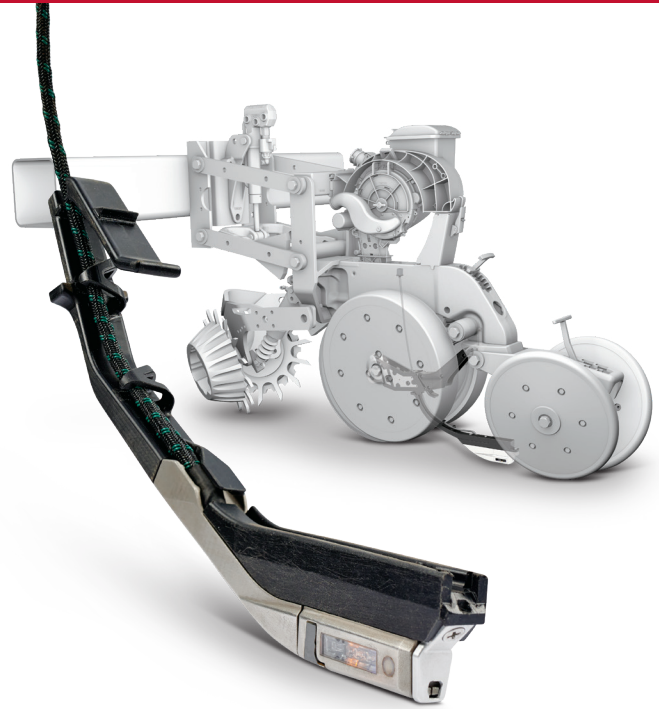
\* Jason Webster, Beck's PFR Research, Third-Party 5-Year Down Force Study, Pub. 2013. Results showed DeltaForce 4.9 bushels per acre advantage over AirForce (1 year) and AirForce 3.9 bushels per acre advantage over the optimal static setting (5 years).

## SMARTFIRMER®

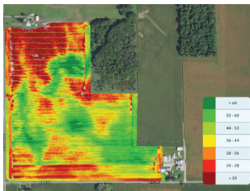
### The Furrow – The Seed’s Lifeline

The furrow holds the key to your crop’s potential. However, getting timely information about the condition of the furrow during planting can be difficult at best. SmartFirmer lets you see into every furrow using a seed-firmer sensor that measures organic matter, moisture, residue and temperature and displays the information on the 20120 display so decisions can be made in the go.

- Row-by-row visibility to soil moisture and temperature in the seed furrow
- Measure organic matter and residue
- Identify irregularities in the furrow
- Optimize hybrid selection, depth, fertility, and row cleaners in real time

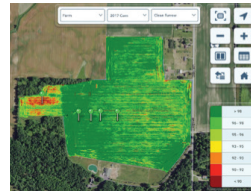


### Soil Moisture Sensing



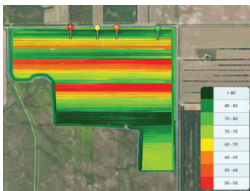
Soil moisture is critical for seed germination and uniform plant emergence, and ultimately crop yield. SmartFirmer gives you row-by-row visibility to soil moisture in the seed furrow, allowing you to choose the right planting depth as soil conditions change.

### Residue Sensing



In-furrow crop residue has well-known negative impacts on seed germination and growth. SmartFirmer allows you to measure the quantity of in-furrow residue and adjust row cleaners accordingly, thus ensuring residue won’t limit seed moisture uptake or transmit disease.

### Soil Temperature Sensing



Sufficient soil temperature is imperative for rapid seed germination. The time for a corn seed to germinate will dramatically increase as temperatures drop below 50 degrees Fahrenheit. SmartFirmer gives you row-by-row visibility of soil temperature in the seed furrow, ensuring that you are planting in favorable conditions.

### Organic Matter Sensing



Soil type, organic matter, topography, drainage and many other attributes contribute to differences in yield potential within the same field. Using a high definition organic matter map, SmartFirmer allows you to develop precision prescriptions for planting population, seed hybrid, and fertility applications to manage these variations.



What if you could make automatic adjustments based on this information? You can. SmartFirmer provides automatic, on-the-go control of planting populations or hybrids based on organic matter measurements.

## CLEANSWEEP

### Create the Perfect Seedbed Without Getting Out of Your Cab

Uniform germination and higher plant counts depend on clean rows. Clean rows are the work of row cleaners. But, until now, row cleaners have been hard work themselves, because they need to be set precisely and changed frequently.

But now, CleanSweep does all that hard work for you. It puts row cleaners right where they need to be – where they move the residue but not the soil – and continuously adjusts them as field conditions change. All you need to do is move the cab-mounted controller. You can even raise the row cleaners up and out of the way when you're not using them.

- Continuously adjust to changing field conditions
- Prevent residue from being hair pinned in the seed trench
- Move residue – not soil



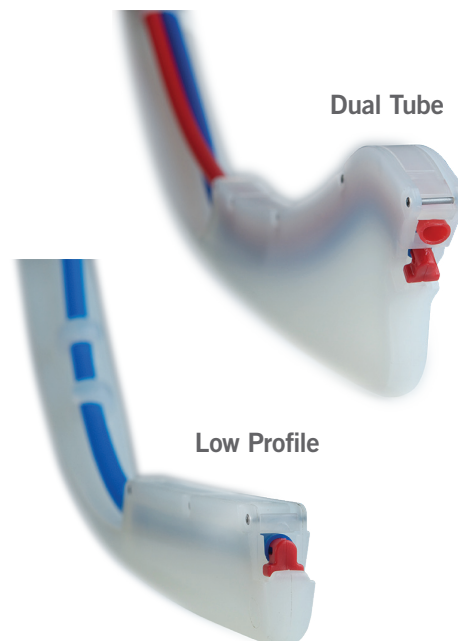
## KEETON

### Firmer is Better

Seeds don't always land right in the bottom of the trench where they belong. But, with its unique, in-the-trench design, the Keeton Seed Firmer is designed to exert a light amount of pressure to gently firm the seed into the bottom of the trench, resulting in even depth, correct seed-to-soil contact, uniform germination, and optimum yield.

By achieving a more accurate depth and even emergence, Keeton Seed Firmers can increase your plant and ear counts by 1,500 to 2,000 per acre. When seeds start out at the same depth, they are more likely to emerge at the same time. Tests show that uniform emergence can boost yield by 5%.

Keeton Seed Firmers are available for virtually every planter or drill, with single or dual applicator tubes. Put one on each of your row units and watch your seeds do their very best.



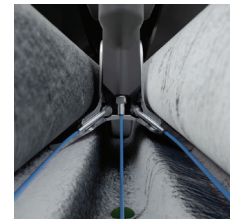
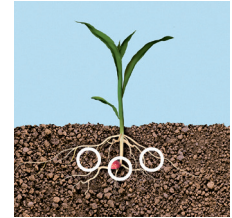
## FURROWJET®



### The Optimum Starter Placement

FurrowJet is a planter fertilizer attachment which enables you to place not only an in-furrow starter fertilizer, but also a dual-band of fertilizer 3/4" on each side of the seed. FurrowJet rides in the furrow just above the seed, firming while placing starter. Wings on FurrowJet angle downward to cut into the sidewall and place fertilizer alongside the seed in a dual-band. By being near-furrow, this placement gives the seedling and crown roots immediate and continuous access to the nutrients. Combined with accurate placement, FurrowJet is flexible, allowing increased rates and common starters to be applied safely, avoiding seed burn risk.

- Provides immediate and continuous access to nutrients for the seedling and crown roots
- Easy mounting to quick-attach firmer bracket
- Flexible allowing starter placement in 3 locations with a single device



1 Device. 3 Locations.

### COMPATIBILITY

#### Compatible Row Units:

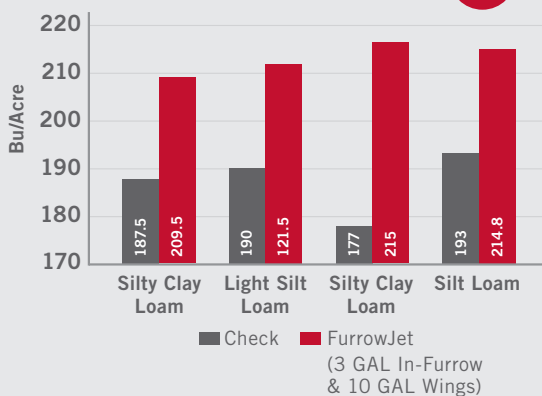
- John Deere MaxEmerge
- MaxEmerge 5
- Kinze 2000 - 4000
- White 9000
- Harvest International Laser Pro

### Yield Response You Can See

Farm Journal starter test plots were planted May 6 and 7 in 2016. Within 24 hours of planting, this field received excessive rainfall in a short amount of time, which played a role in the results. “The large yield responses show the effect of starter fertilizer placement and the horsepower it provides to mitigate early season stress,” Ken Ferrie said. “The fact we were able to weatherproof this plot by replicating it across the field makes the large yield increases more believable.” The first study was a comparison of the check to FurrowJet applying three gallon in-furrow and ten gallon through the wings. The second study compared the check to in-furrow only, FurrowJet (tri-band) and a 2 x 2 with a Keeton seed firmer together. FurrowJet saw a 26 bu/a average advantage over check on plot A and a 28 bu/a average advantage over check on plot B.

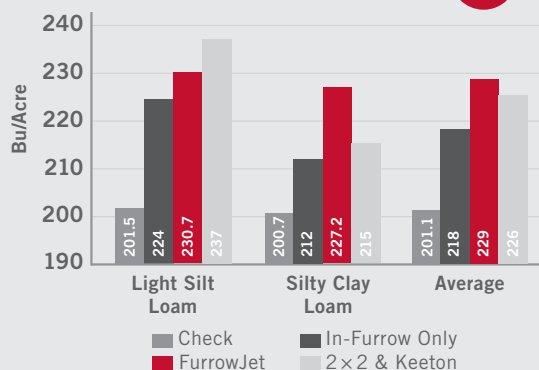
#### A: Yield Response to Placements

+26  
bu/a



#### B: Yield Response to Placements

+28  
bu/a



## SPEEDTUBE

### Plant 2x Faster\*

#### Focused on the perfect plant and seed

SpeedTube has broken seed tube convention. Planting with SpeedTube enables accurate seed spacing at any speed – regular seed tubes just can't handle going faster. Take control of your best planting window at double your speed.

The secret is in the flighted belt that takes gravity out of the equation. There's no opportunity for seeds to ricochet into the trench. Even at twice the speed you normally plant, every seed arrives safely at the bottom of the trench, spaced evenly, every time. So the perfect plant spacing is attainable, while maximizing that perfect planting window.

- More acres planted with less iron
- Industry-leading vDrive inside for sub-second execution
- Flighted belt gets seed from meter to furrow with no ricochet

*\* SpeedTube for Case IH 1200 series planter recommended for accuracy improvement only.*

### Improve Your Planter Performance While Making Your Planter Simpler



#### Grab that seed

Feeder wheels grab the seed off the disc and place it onto the belt for delivery to the trench while maintaining superior singulation and spacing.

#### Control its descent

The belt matches the speed of the planter and carries the seed all the way to the bottom of the trench.

#### Release without roll

The seed drops exactly where it needs to be as SpeedTube eliminates seed roll and bounce.

## WAVEVISION

### Discriminate Against Dust

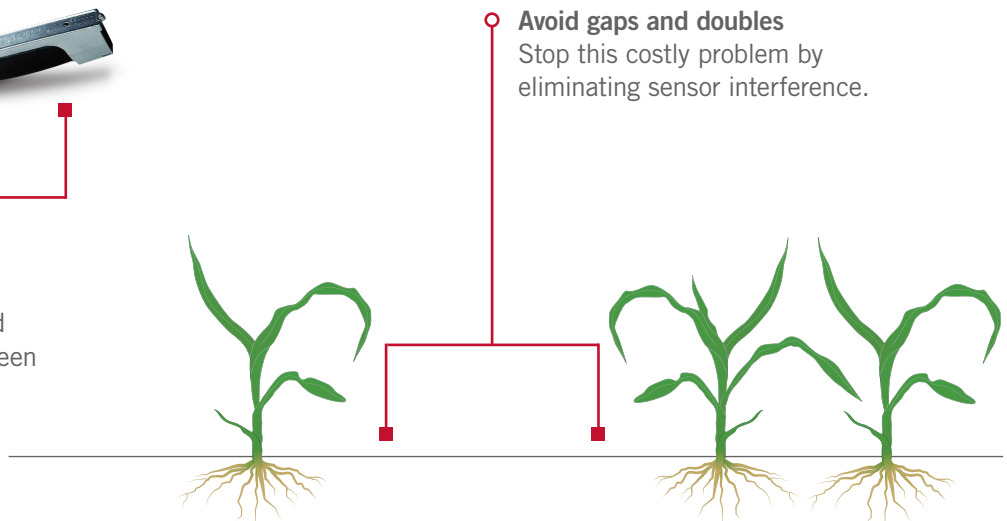
To get accurate counts of the seeds you're planting, you rely on your seed tube sensors. Optical sensors aren't always reliable in dusty conditions or near tires where debris can be kicked up. They can report dust and debris as seeds. Then you get bad counts. Then your yield suffers because you're not making needed adjustments as you plant.

WaveVision sensors and seed tubes don't depend on optics. They don't see seeds, they detect mass, using high-frequency sensors. They can tell the difference between seeds and dust or debris, and count only the seeds. You get accurate counts, so you can plant what you plan. Your yield improves.



- **A high-frequency sensor**  
It counts only the seeds and can tell the difference between seeds, dust, or debris.

- **Avoid gaps and doubles**  
Stop this costly problem by eliminating sensor interference.



## mSET®

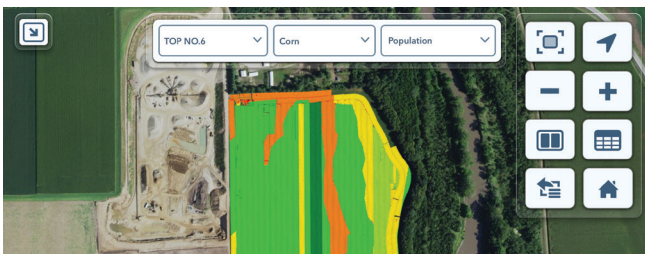
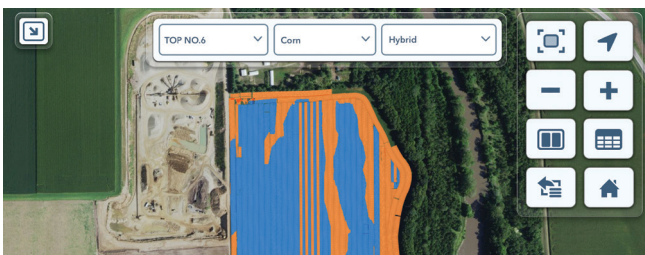
### Field Variability

Different hybrids are often used in different fields to account for the variability between fields. But what about the variability that exists within a single field, or even a single pass? Changing hybrids within the field and within a pass can maximize profit potential.



### Different Genetics Provide Different Results

In this field, there are timber soils along the tree-line, as well as some gravel veins that run through the middle of the field. For years this field has seen reduced profit potential from being planted to a single hybrid.



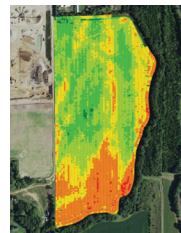
See how mSet was utilized to plant the best hybrid for these different areas of the field.

### Multi-Hybrid Planting

mSet® allows you to change between two hybrids within a single field and even within a single pass. It is built on the unparalleled accuracy of vSet and vDrive which provide impeccable seed placement and simplicity of drive system. A seed selector is added to the hopper to switch hybrids, along with a seed pool level sensor in the meter. At hybrid change, the level sensor will let the seed pool run low, then call for a dose of the other hybrid to enter the meter just in time for the change, leading to a short transition between hybrids. The seed pool is being controlled by the mSet selector so there is always a small amount of the correct hybrid in the meter, allowing the vSet meter to accurately singulate those seeds. The result is the hybrid you select, in the area of the field you select, planted with the highest accuracy.

- Reduce seed cost in areas with less potential while increasing yields in areas with more potential
- Compatible with either seed tubes or SpeedTube
- Can be added to an existing vSet meter system

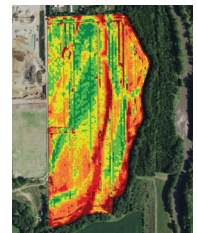
Look at the variability in organic matter in this field. Averaging the field by planting a single hybrid is leading to yield loss in the best areas, and overspending on seed in the areas that are not capable of producing as much.



Organic

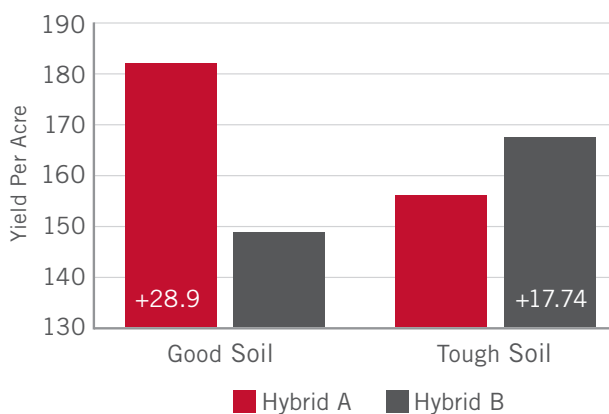


Hybrid



Yield

### Multi- Genetic 2016 Study



**eSET** ALL MAKES

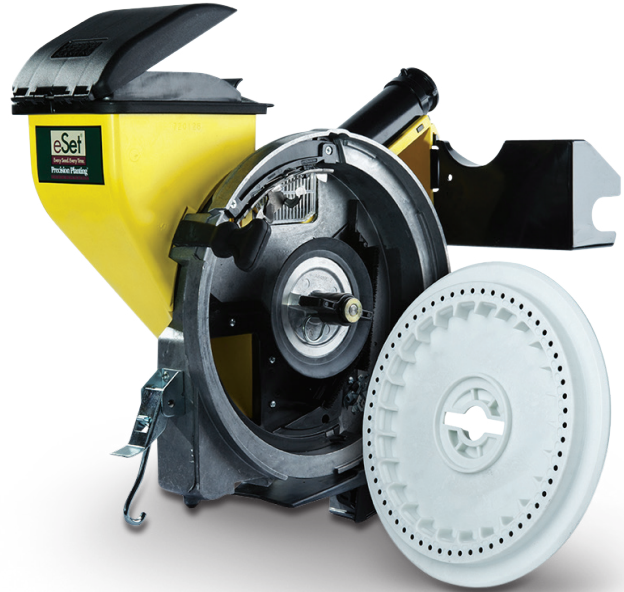
## Every Seed, Every Time

Selecting the eSet meter is a no-brainer. It has a flat disk with a single vac setting, eliminating constant adjustments. It releases seeds down the center of the tube – critical to optimum spacing. It has a 5-lobed singulator that makes sure no two seeds of any kind can occupy the same hole. One seed locks in and one seed drops. Every time.

eSet is a star of simplicity. It handles any seed size or shape without finicky tweaks to vac pressure, disk or singulator settings. Just pour in the seed and go. Then get ready for your best possible yield.

A simple replacement for OEM vacuum disks on John Deere planters. You get the disk, baffle, singulator, brushes and seed extractor. Everything mounts to your existing meter housing (1991 or later).

- Outstanding reliability
- Easy to maintain
- Easy to use





## YIELSENSE ALL MAKES

### Simple Harvest Data

YieldSense drives better decisions with data you can trust. Other yield monitors fall short. When speed changes, so does the mass of grain passing the flow sensor, and you get varying results. YieldSense changes the way grain flow is measured. Our patented flow sensor is installed in the correct location, so accurate yield is measured across all mass rates.

With real time yield by hybrid reports, wireless data sharing between combines, and a Grain Property Kit to keep the system accurate, YieldSense gives you the tools you need for better decisions at harvest and beyond.

Make sense of your yield data and make better decisions for your operation:

- Instead of time consuming re-calibrations, get simple, reliable results
- Instead of isolated information, get instant connectivity and sharing
- Instead of complicated desktop software, get yield-by-hybrid reports instantly from the cab
- Instead of only whole-field results, get zone-by-zone yield data unlike any other yield monitor

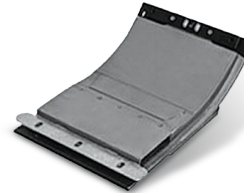


#### Forget recalibrating

As field conditions change, the grain property kit adjusts YieldSense on the fly.

#### Consistent paddle shape

Unique paddle shape directs grain flow consistently across the flow sensor.



#### Measure flow in the right place

Our flow sensor is in the correct location to measure accurate mass flow rates.

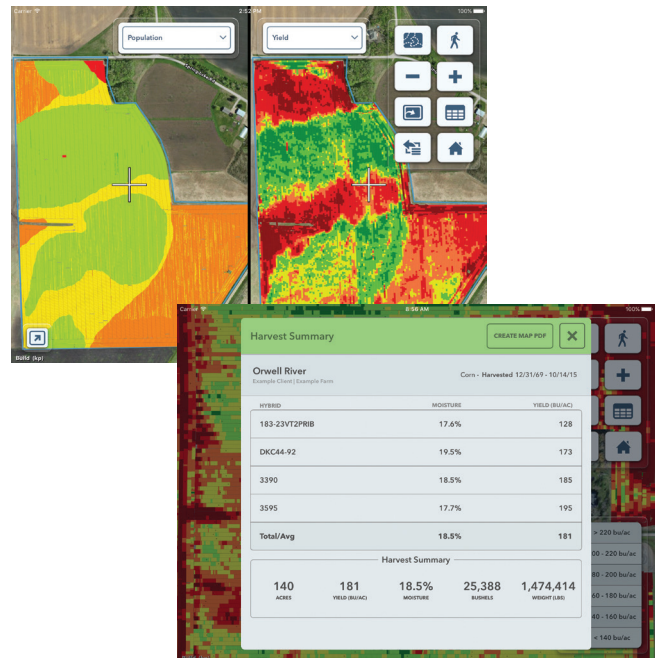
### Planning

Data that requires complicated desktop software doesn't allow you to make real time decisions from the combine. YieldSense does. It can show you side-by-side maps – yield and as-planted – as you move across the field. You can make meaningful comparisons across yield zones, hybrids, fertilizer levels and more. That allows you to make better decisions for the future.

- Ultimate Accuracy
- Real-Time Yield by Hybrid Reports
- Wireless Data Sharing Between Combines
- Define Management Zones
- Enhanced with Climate Fieldview™ Plus

### Detail and Summary

You can get average bushels per acre for the whole field from just about any yield monitor. But only YieldSense will give you yield by hybrid reports from the cab. So you can confidently plan changes for next year real time.





# RAPID REPAIR PROGRAM

## REPAIR PROGRAM FOR PRECISION DISPLAYS

Need a quick fix for broken displays? Your Case IH dealership now offers a Rapid Repair program for AFS 200/300 and Pro 600/700 displays through CNH Industrial Reman. This new program offers you a choice of repair levels with a quick turnaround time performed in our ISO 9001 certified facility by IPC Certified Solder technicians – all at a great price!

CNH INDUSTRIAL REMAN RAPID REPAIR PROGRAM FOR AFS 200, AFS 300, PRO 600 & PRO 700			
DISPLAY TYPE	SILVER	GOLD	PLATINUM
AFS 200	Audio Alarm, Console Connector, Card Reader	Silver Service plus LCD and Touch Screen replaced	Reman Unit, if unit cannot be repaired
AFS 300	Audio Alarm, Console Connector, Card Reader	Silver Service plus LCD and Touch Screen replaced	Reman Unit, if unit cannot be repaired
Pro 600	Audio Alarm, Back-up Battery, Display Backlight, Console Connector, Card Reader	Silver Service plus LCD and Touch Screen replaced with Bonded Screen	Reman Unit, if unit cannot be repaired
Pro 700	USB Port, Back-Up Battery, Audio Alarm	Silver Service plus, Touch Screen, LCD Screen	Reman Unit, if unit cannot be repaired

### Benefits of the CNH Industrial Reman Rapid Repair Program:

- Full Function OE Testing
- 1 Year Warranty
- ISO 9001 Certified Facility
- Controlled Electronics Manufacturing Environment
- IPC Certified Solder Technicians
- 2-3 Business Days Turnaround Time from Point of Receipt
- On Platinum level, data will be transferred if accessible



Pro 700 Display

**Stop by your local dealership for more information on how you can save money and time with Rapid Repair!**

#### Terms and Conditions

12-month parts only warranty coverage on work completed during repair on the authorized service level purchased. (Platinum level has 1 year parts and labor warranty coverage). Units in receipt with evident lightning/water submergence or a decommissioned unit are deemed irreparable. Units that cannot be repaired will not be returned and no core return will be issued.



Sold and Serviced By:

---

**FOR THE LATEST PRODUCT INFORMATION,  
STOP BY YOUR LOCAL CASE IH DEALER OR VISIT:  
[WWW.PARTSTORE.CASEIH.COM](http://WWW.PARTSTORE.CASEIH.COM)**



PM-18308 Issued 3/2019 Replaces: PM-16233

©2019 CNH Industrial America LLC. All rights reserved. Case IH is a trademark registered in the United States and many other countries, owned by or licensed to CNH Industrial N.V., its subsidiaries or affiliates. Any trademarks referred to herein, in association with goods and/or services of companies other than CNH Industrial America LLC, are the property of those respective companies. [www.caseih.com](http://www.caseih.com)